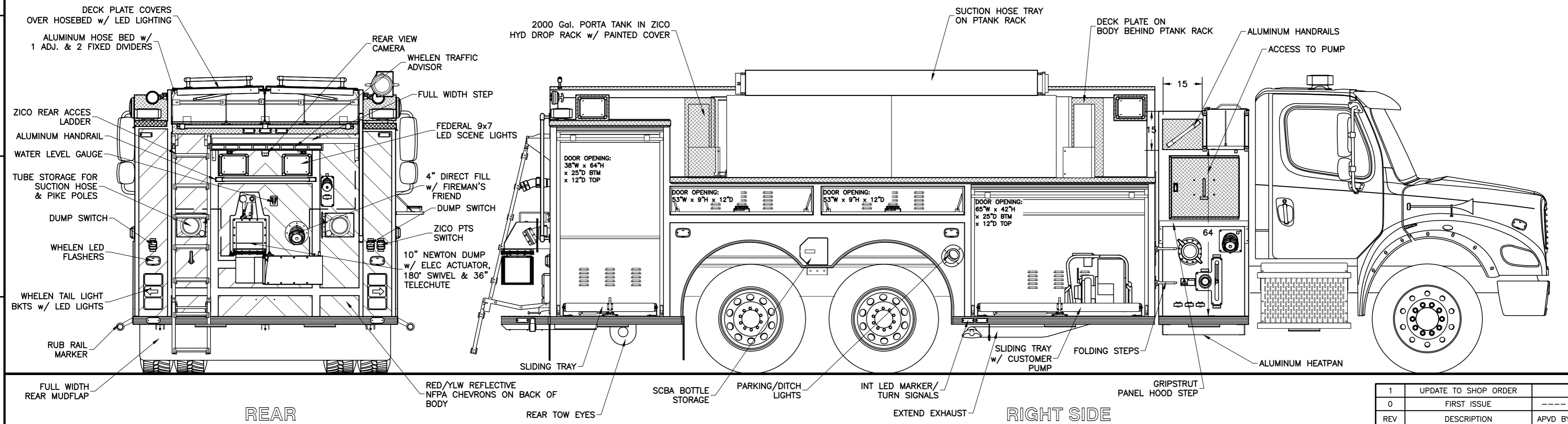
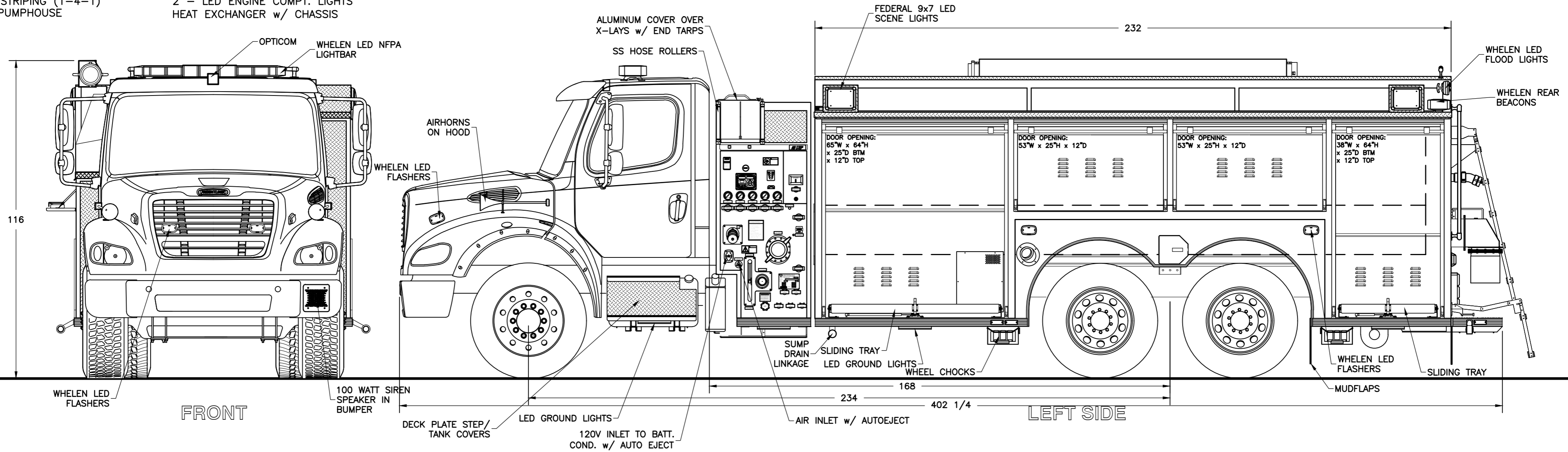


NOT SHOWN:
 CONSOLE IN CAB
 TRACTION CHAINS
 6 - ADJ. SHELVES
 REFLECTIVE STRIPING (1-4-1)
 HEATER IN PUMPHOUSE

GOOSENECK MAP LIGHT
 BACK UP ALARM w/ CHASSIS
 2 - SHORELINE OUTLETS
 2 - LED ENGINE COMPT. LIGHTS
 HEAT EXCHANGER w/ CHASSIS



1	UPDATE TO SHOP ORDER	07-09
0	FIRST ISSUE	---
REV	DESCRIPTION	APVD BY DATE
REVISIONS		

CHASSIS: FREIGHTLINER M2 112
 PUMP: HALE MG 625
 TANK: 2000 Imp. Gal. POLYPROPYLENE
 FOAM: N/A

SUCTION: 1 - 6" LEFT
 1 - 6" RIGHT
 1 - 4" TANK TO PUMP (ELEC GATE)
 1 - 2 1/2" LEFT

DISCHARGES: 1 - 2 1/2" LEFT
 1 - 4" RIGHT
 1 - 2 1/2" REAR
 2 - 1 1/2" CROSSLAYS
 1 - 2 1/2" TANK FILL

BROOKFIELD
 FIRE DEPARTMENT
 JOB No. PROPOSAL
 DRAWN BY T CULLINS
 DATE 03-26-13
 METALFAB LTD.
 847 CENTRAL ST. CENTREVILLE
 NB. CANADA E7K 2E8

TITLE GENERAL ARRANGEMENT

DRAWING NO. FT-10503

REV 1

-ALL ALUMINUM CONSTRUCTION - ALL DIMENSIONS ARE IN INCHES & APPROXIMATE