

8

7

6

5

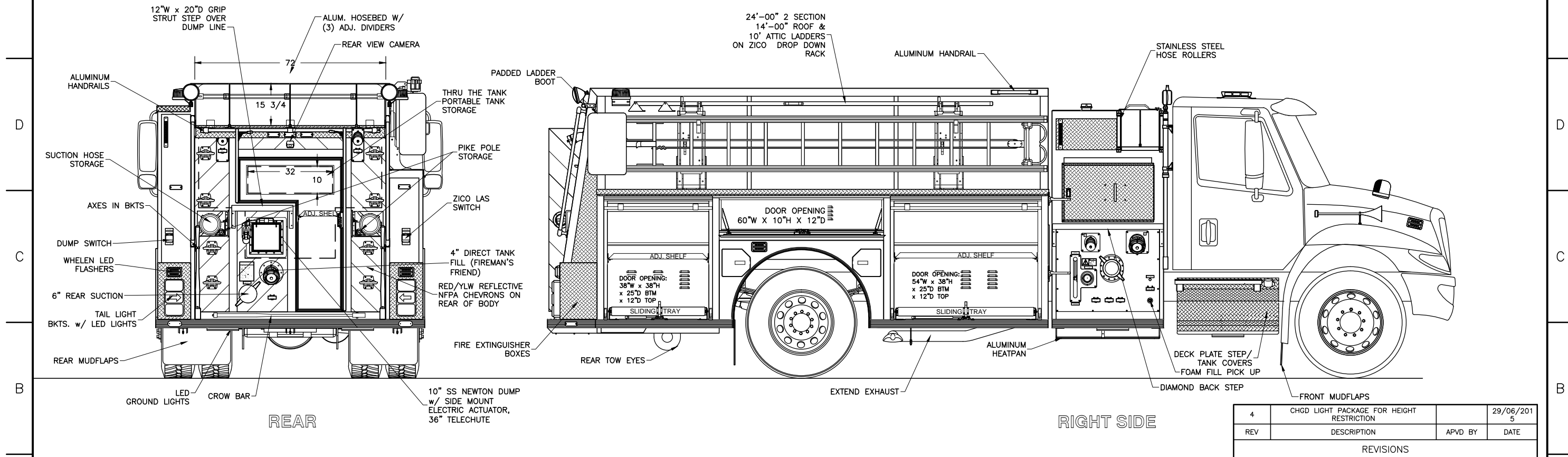
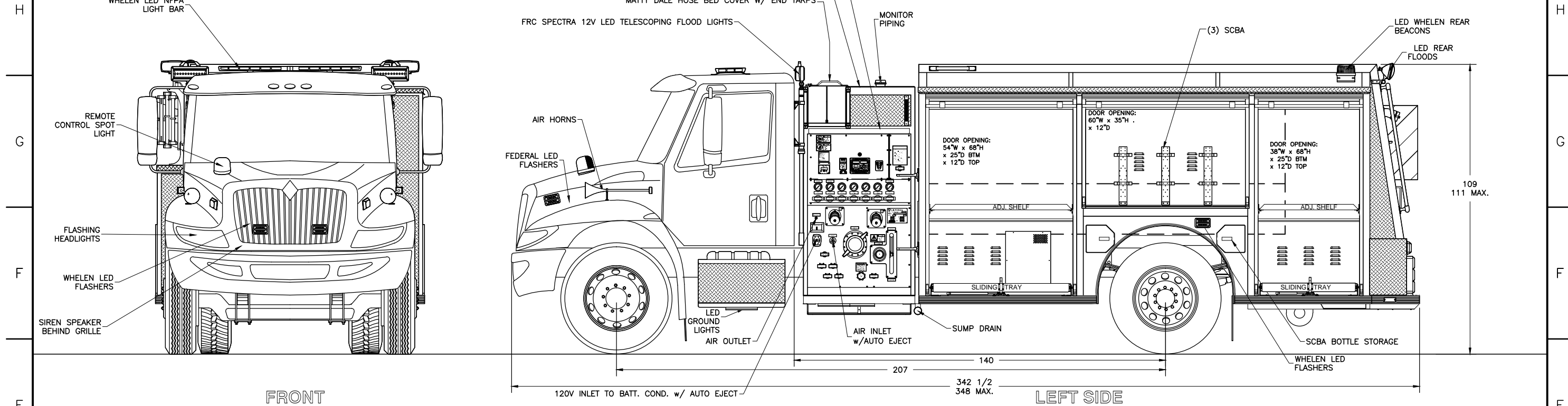
4

3

2

1

NOT SHOWN:  
CONSOLE IN CAB



REV	DESCRIPTION	APVD BY	DATE
4	CHGD LIGHT PACKAGE FOR HEIGHT RESTRICTION		29/06/2015

REVISIONS

A	CHASSIS: INTERNATIONAL 4400 W/ SCR ENGINE	SUCTION: 1 - 6" LEFT (ELEC MIV)	DISCHARGES: 1 - 4" RIGHT	TITLE: GENERAL ARRANGEMENT
	PUMP: HALE QFLO 1050 IGPM	1 - 6" RIGHT (ELEC MIV)	2 - 1 1/2" CROSSLAYS (FOAM)	
	TANK: 1000 Imp. Gal, POLYPROPYLENE	1 - 6" REAR (5" PIPE, ELEC MIV)	1 - 3" MONITOR	DEER ISLAND FIRE DEPARTMENT
	1 - 20 Imp. Gal. FOAM CELL	1 - 4" TANK TO PUMP	2 - 2 1/2" LEFT	
	FOAM: HYPRO FOAMPRO 2001 SINGLE	1 - 2 1/2" LEFT	1 - 2 1/2" RIGHT (FOAM)	DRAWN BY J. O'LEARY
		1 - 2 1/2" RIGHT	2 - 2 1/2" REAR (FOAM) RS ONLY	DATE 7-1-15
			1 - 3" TANK FILL	
	-ALL ALUMINUM CONSTRUCTION - ALL DIMENSIONS ARE IN INCHES & APPROXIMATE			DRAWING NO. FT-10682
				REV 4

8

7

6

5

4

3

2

1