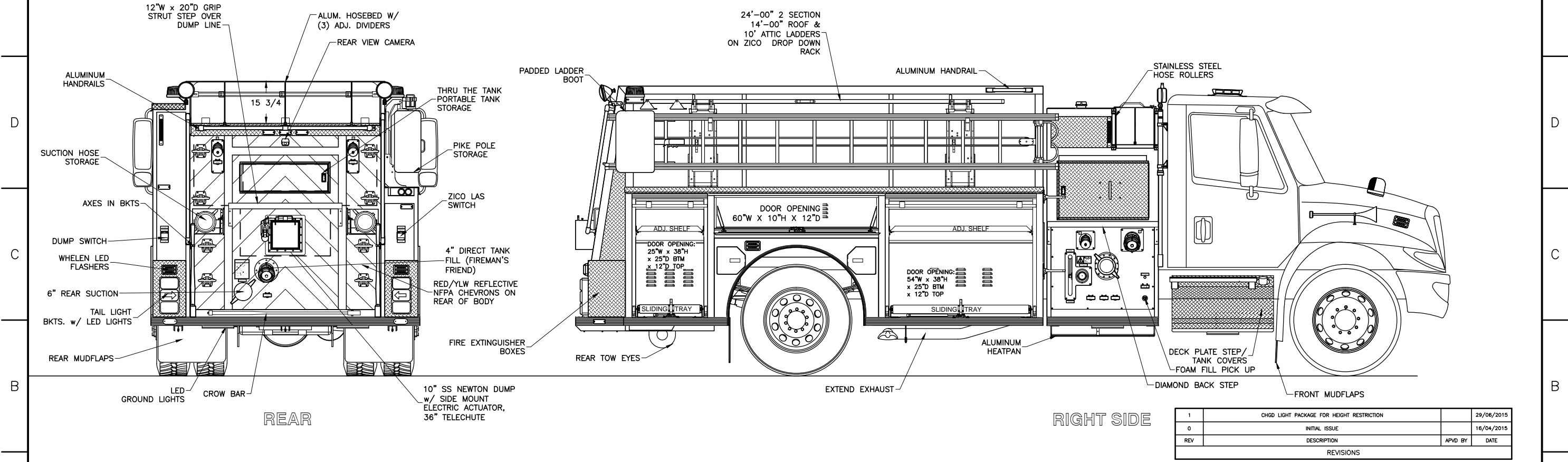
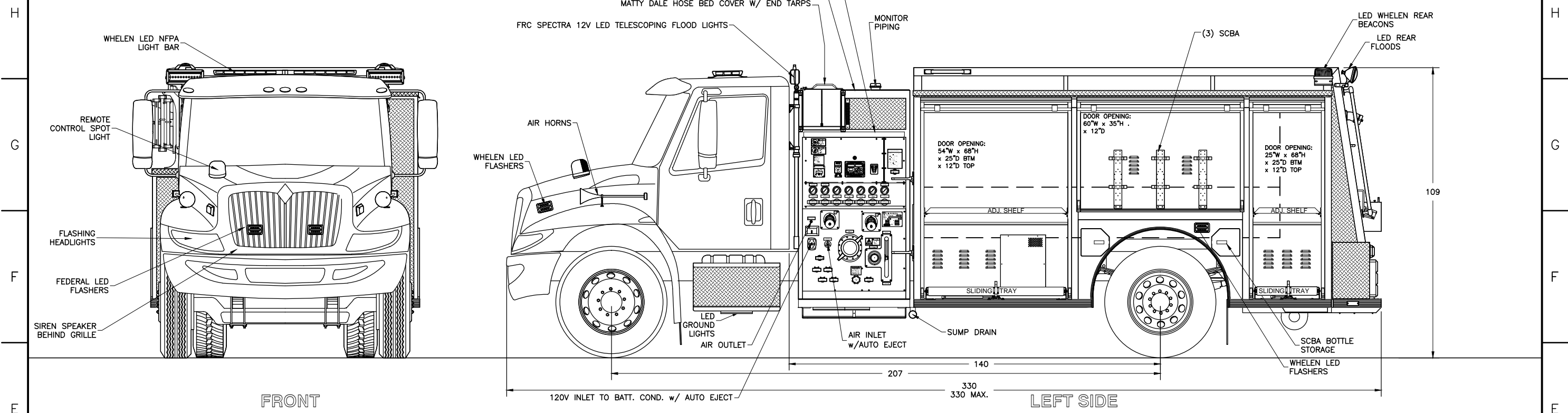


NOT SHOWN:  
CONSOLE IN CAB



1	CHGD LIGHT PACKAGE FOR HEIGHT RESTRICTION	29/06/2015
0	INITIAL ISSUE	16/04/2015
REV	DESCRIPTION	APVD BY DATE
REVISIONS		

<p>CHASSIS: INTERNATIONAL 4400 W/ SCR ENGINE</p> <p>PUMP: HALE QFLO 1050 IGPM</p> <p>TANK: 1000 Imp. Gal, POLYPROPYLENE</p> <p>1 - 20 Imp. Gal. FOAM CELL</p> <p>FOAM: HYPRO FOAMPRO 2001 SINGLE</p>	<p>SUCTION: 1 - 6" LEFT (ELEC MIV)</p> <p>1 - 6" RIGHT (ELEC MIV)</p> <p>1 - 6" REAR (5" PIPE, ELEC MIV)</p> <p>1 - 4" TANK TO PUMP</p> <p>1 - 2 1/2" LEFT</p> <p>1 - 2 1/2" RIGHT</p>	<p>DISCHARGES: 1 - 4" RIGHT</p> <p>2 - 1 1/2" CROSSLAYS (FOAM)</p> <p>1 - 3" MONITOR</p> <p>2 - 2 1/2" LEFT</p> <p>1 - 2 1/2" RIGHT (FOAM)</p> <p>2 - 2 1/2" REAR (FOAM) RS ONLY</p> <p>1 - 3" TANK FILL</p>
--	--	--

<p>MOORE'S MILLS FIRE DEPARTMENT</p> <p>JOB No. 18194</p> <p>DRAWN BY J. O'LEARY</p> <p>DATE 4/16/15</p>	<p>TITLE GENERAL ARRANGEMENT</p>
<p>DRAWING NO. FT-10719</p>	<p>REV 1</p>

-ALL ALUMINUM CONSTRUCTION - ALL DIMENSIONS ARE IN INCHES & APPROXIMATE