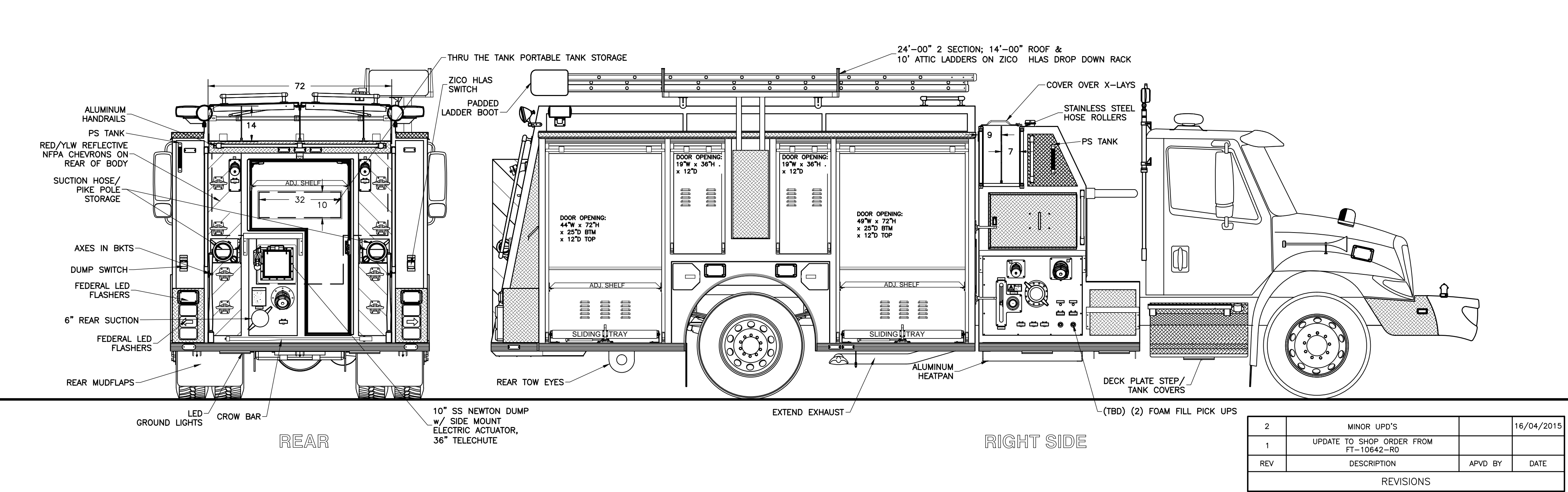
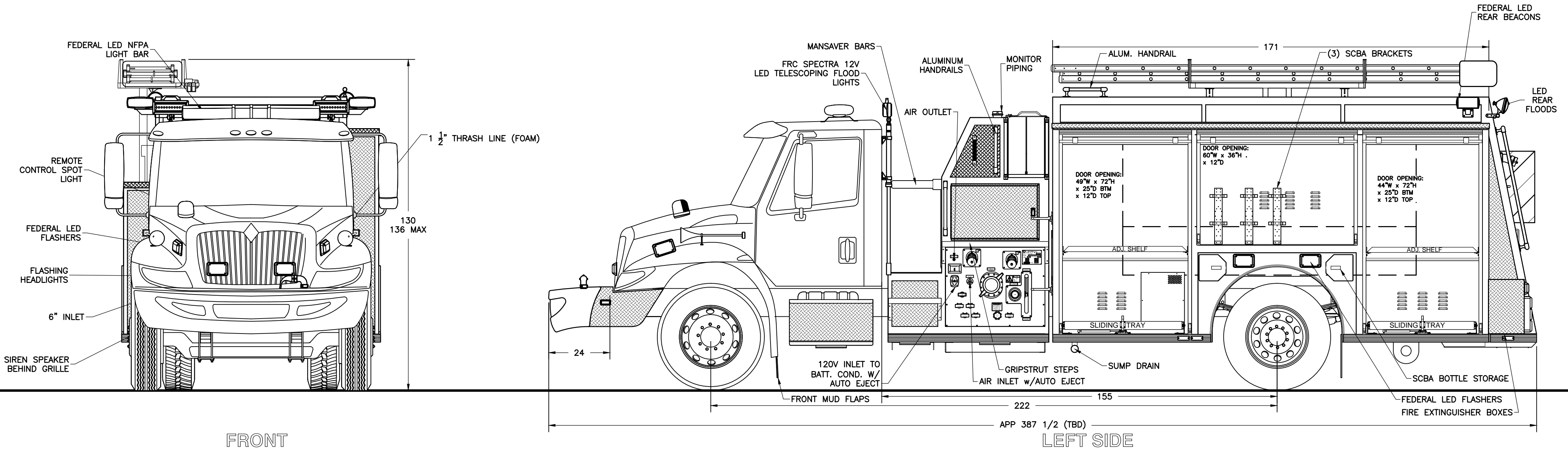


NOT SHOWN:  
CONSOLE IN CAB



REV	DESCRIPTION	APVD BY	DATE
2	MINOR UPD'S		16/04/2015
1	UPDATE TO SHOP ORDER FROM FT-10642-RO		

REVISIONS

CHASSIS: INTERNATIONAL 4400	SUCTION: 1 - 6" REAR (5" PIPE, ELEC MIV)	DISCHARGES: 1 - 4" RIGHT	1 - 1 1/2" TRASHLINE (FOAM)	OAK BAY FIRE DEPARTMENT JOB No. 18231 DRAWN BY J. O'EARLY DATE 07-18-14	TITLE GENERAL ARRANGEMENT METALFAB FIRE APPARATUS
PUMP: HALE QFLO 1050 IGPM	1L, 1R - 6" (ELEC MIV)	1 - 3" MONITOR	2 - 1 1/2" CROSSLAYS (FOAM)		
TANK: 1000 Imp. Gal, POLYPROPYLENE	1L, 1R - 2 1/2"	2 - 2 1/2" LEFT	1 - 2 1/2" RIGHT (FOAM)		
2 - 20 Imp. Gal. FOAM CELL	1 - 4" TANK TO PUMP	2 - 2 1/2" REAR (FOAM) RS ONLY	1 - 3" TANK FILL		
FOAM: HYPRO FOAMPRO 2001 DUAL					DRAWING NO. FT-10676

-ALL ALUMINUM CONSTRUCTION - ALL DIMENSIONS ARE IN INCHES & APPROXIMATE