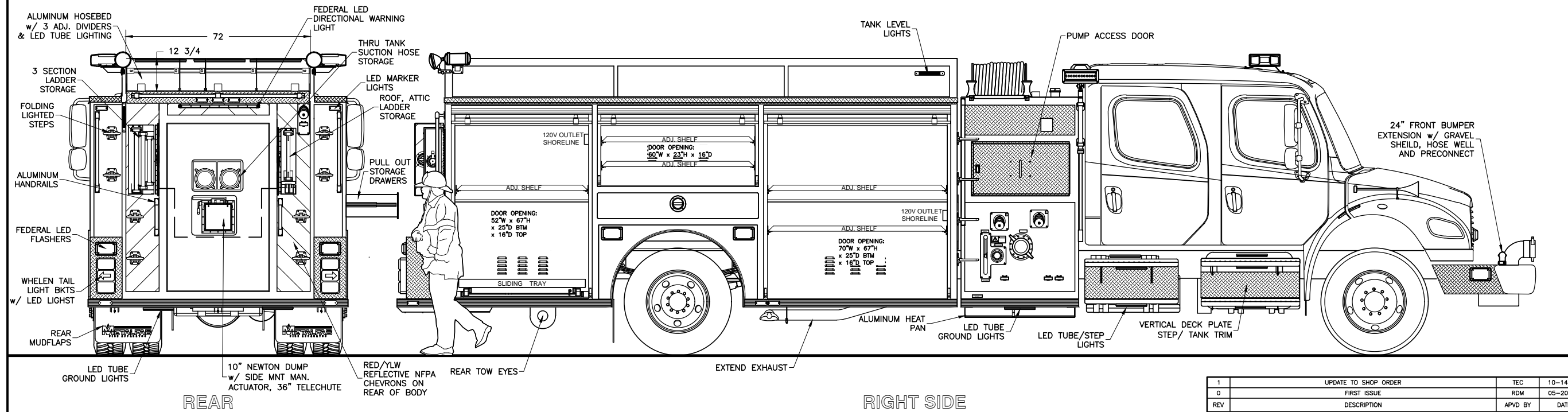
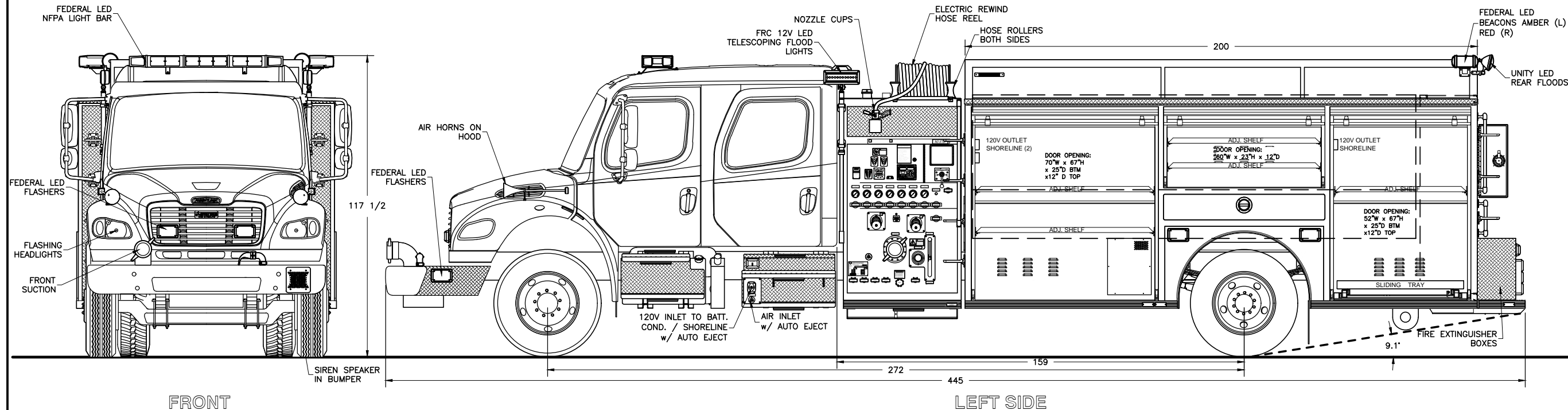


**NOT SHOWN:**

VEHICLE DATA RECORDER  
TIRE PRESSURE INDICATORS  
CONSOLE IN CAB  
KUSSMAUL BATT. COND.  
CLASS 1 ELEC SYSTEM MANAGER  
CLASS 1 ENGINE GOVERNOR  
FEDERAL SIREN

DOOR AJAR LIGHT IN CAB  
INSTALL CUSTOMER RADIO(S)  
TURTLE TILE COMPT. FLOOR MATTING  
LED TUBE COMPT. LIGHTS  
REFLECTIVE STRIPING  
TARP OVER HOSE BED

HEATER IN PUMP HOUSE



CHASSIS: FREIGHTLINER M2 106 4 DOOR  
PUMP: HALE QFLO 1050 IGPM MIDSHIP  
TANK: 1200 Imp. Gal. POLYPROPYLENE  
2 - 10 Imp. GAL FOAM CELLS  
FOAM: FOAMPRO 2001

SUCTION: 1 - 6" LEFT (NOT GATED)  
1 - 6" RIGHT (NOT GATED)  
1 - 6" FRONT (4" PIPE, MAN. GATE)  
1 - 3" TANK TO PUMP  
1 - 2 1/2" LEFT  
1 - 2 1/2" RIGHT

DISCHARGES: 1 - 4" RIGHT  
1 - 3" MONITOR  
1 - 3" TANK FILL  
2 - 2 1/2" LEFT  
1 - 2 1/2" RIGHT  
1 - 2 1/2" REAR (FOAM)  
1 - 1 1/2" TRASHLINE (FOAM)  
1 - 1" HOSE REEL (FOAM)

REV	DESCRIPTION	APVD BY	DATE	TEC	10-14-16
1	UPDATE TO SHOP ORDER			TEC	10-14-16
0	FIRST ISSUE	RDM	05-20-16		

ST. GEORGE FIRE DEPARTMENT		TITLE GENERAL ARRANGEMENT	
JOB No. 19196			
DRAWN BY RD MACDONALD			
DATE 05-20-16	DRAWING NO. FT-10844		
METALFAB LTD. 847 CENTRAL ST. CENTREVILLE NB. CANADA E7K 2E8		REV 1	

-ALL ALUMINUM CONSTRUCTION - ALL DIMENSIONS ARE IN INCHES & APPROXIMATE