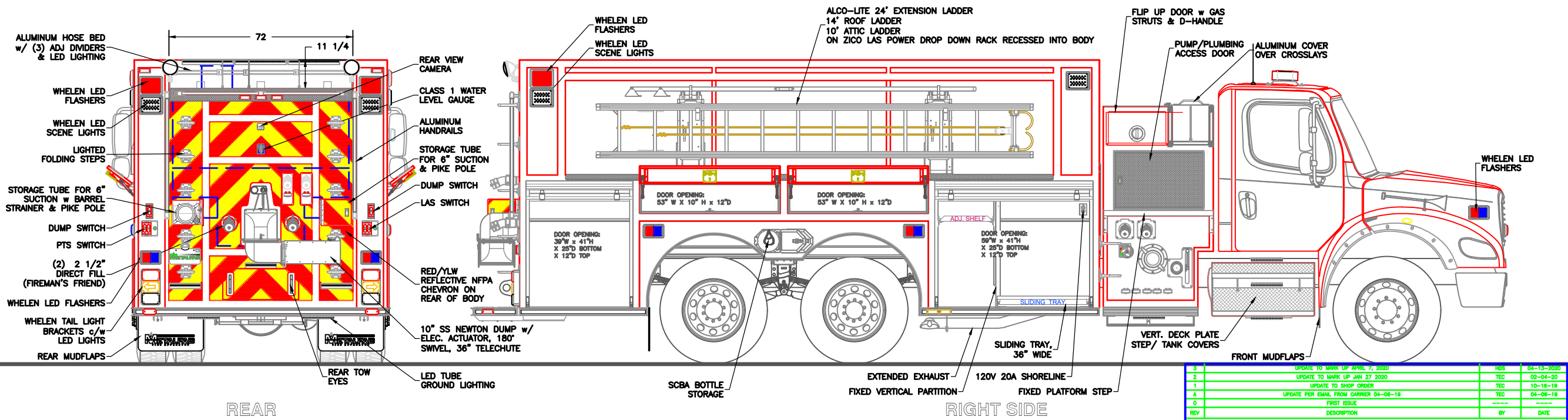
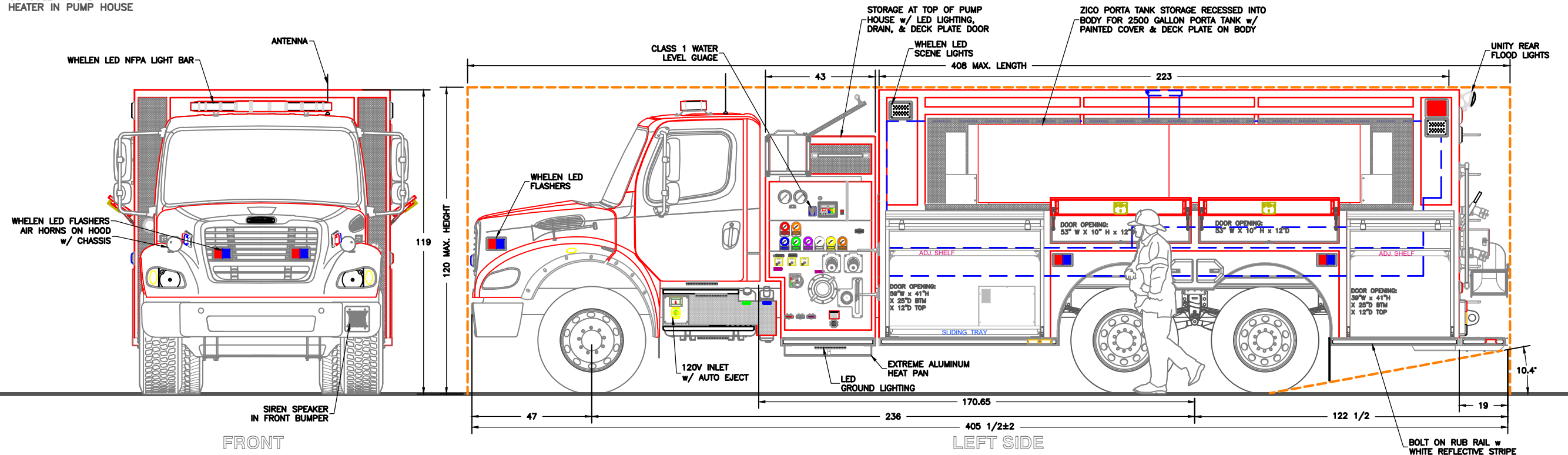


NOT SHOWN:  
 LUMABAR LED COMPARTMENT LIGHTING  
 MESH TYPE HOSE RESTRAINT  
 MESH END TARPS ON CROSSLAY COVER  
 KUSSMAUL BATT. COND. / COMPRESSOR  
 CONSOLE IN CAB  
 HEATER IN PUMP HOUSE



REV	DESCRIPTION	BY	DATE
3	UPDATE TO MARK UP APRIL 7, 2020	POS	04-13-2020
2	UPDATE TO MARK UP JAN 27 2020	TEC	02-04-20
1	UPDATE TO SHOP ORDER	TEC	10-16-19
A	UPDATE PER EMAIL FROM CARRIER 04-08-19	TEC	04-08-19
0	FIRST ISSUE		

CHASSIS: FREIGHTLINER M2112 2-DOOR  
 PUMP: HALE DSD 1050 IGPM MIDSHIP  
 TANK: 2500 IMP GAL POLYPROPYLENE  
 FOAM:

SUCTION: 1 - 6" LEFT (MAN. GATE)  
 1 - 6" RIGHT (MAN. GATE)  
 1 - 3" TANK TO PUMP  
 1 - 2 1/2" LEFT  
 1 - 2 1/2" RIGHT

DISCHARGES:  
 2 - 2 1/2" LEFT  
 2 - 2 1/2" RIGHT  
 2 - 2 1/2" REAR  
 1 - 2" TANK FILL  
 2 - 1 1/2" CROSSLAYS

TRENT HILLS FIRE DEPARTMENT

JOB No. 21100

DRAWN BY T CULLINS

DATE 05/30/19

METALFAB LTD.  
 847 CENTRAL ST. CENTREVILLE  
 NB. CANADA E7K 2E8

TITLE GENERAL ARRANGEMENT

**METALFAB**  
 FIRE TRUCKS

DRAWING NO. FT-11195

REV 3

-ALL ALUMINUM CONSTRUCTION - ALL DIMENSIONS ARE IN INCHES & APPROXIMATE