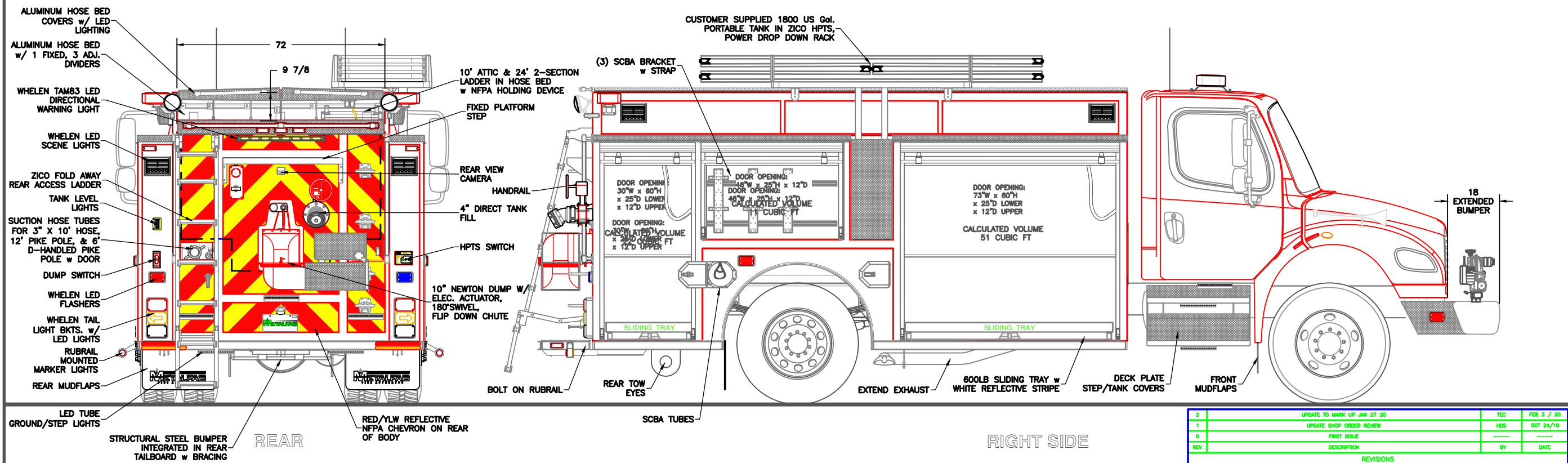
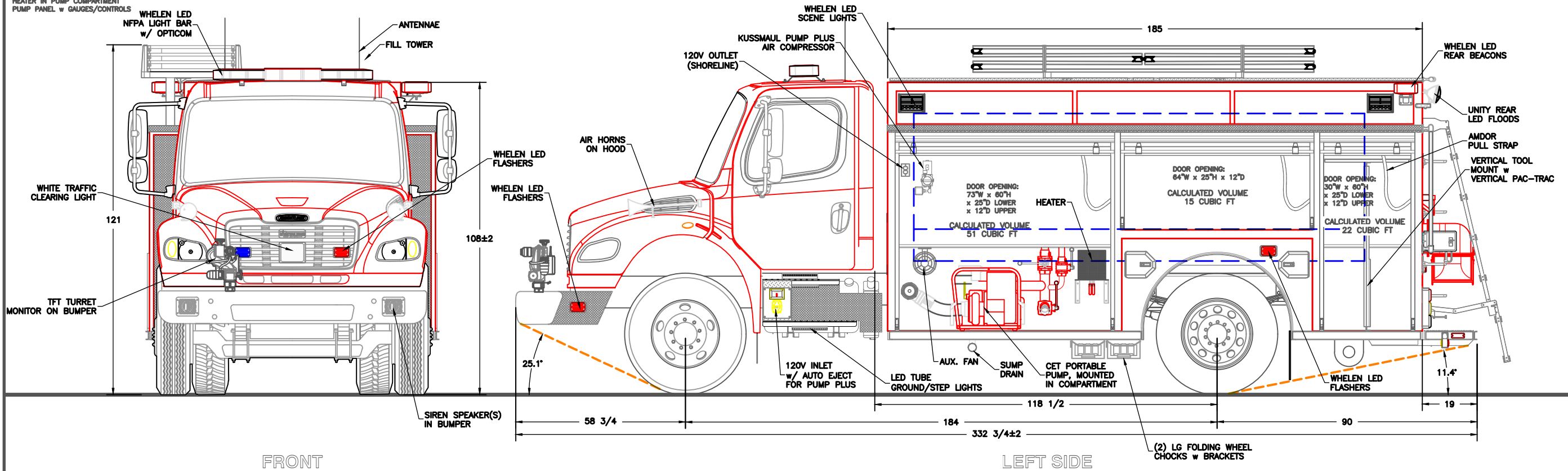


NOT SHOWN:

HEATER IN PUMP COMPARTMENT
PUMP PANEL w GAUGES/CONTROLS



REV	DESCRIPTION	BY	DATE
2	UPDATE TO MARK UP JAN 27 20	TEC	FEB 3 / 20
1	UPDATE SHOP ORDER REVIEW	HDS	OCT 24/19
0	FIRST ISSUE		

CHASSIS: FREIGHTLINER M2 106 2 DOOR
PUMP: CET PORTABLE
TANK: 1500 Imp. Gal. POLYPROPYLENE
FOAM: N/A

SUCTION: 1 - 4" TANK TO PUMP
1 - 3" LEFT (NO GATE)

DISCHARGES: 1 - 2 1/2" TANK FILL
1 - 2" TURRET
1 - 2 1/2" IN L1
1 - 1 1/2" REAR

THE MUNICIPALITY OF NORTH PERTH
JOB No. 21213
DRAWN BY T CULLINS
DATE 07-17-19
METALFAB LTD.
847 CENTRAL ST. CENTREVILLE
NB. CANADA E7K 2E8

TITLE GENERAL ARRANGEMENT

DRAWING NO. FT-11222 SHT 1 OF 2
REV 2

-ALL ALUMINUM CONSTRUCTION - ALL DIMENSIONS ARE IN INCHES & APPROXIMATE