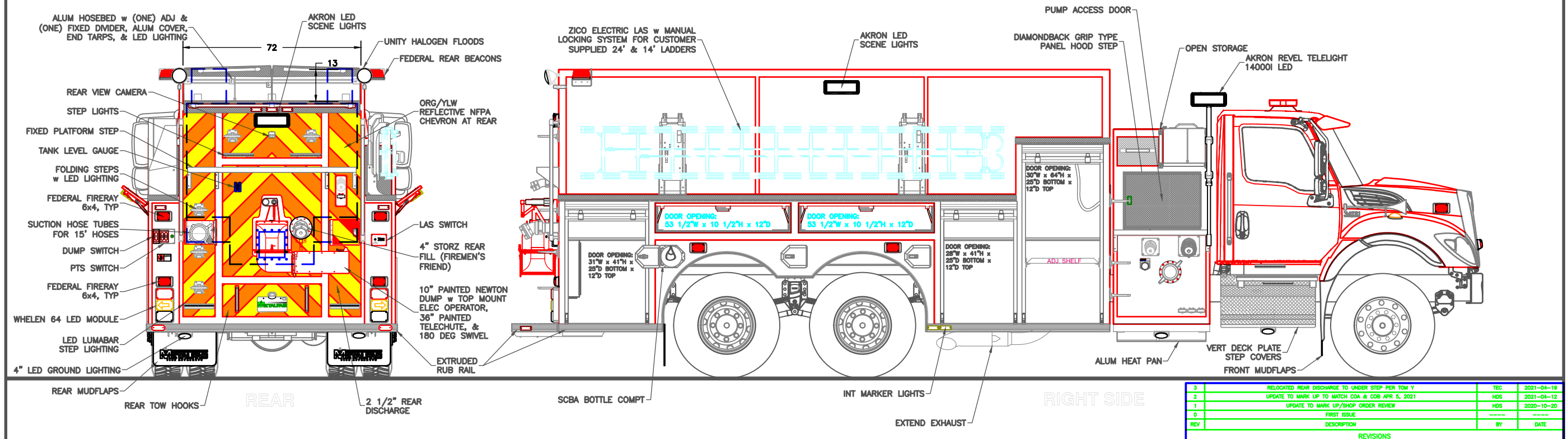
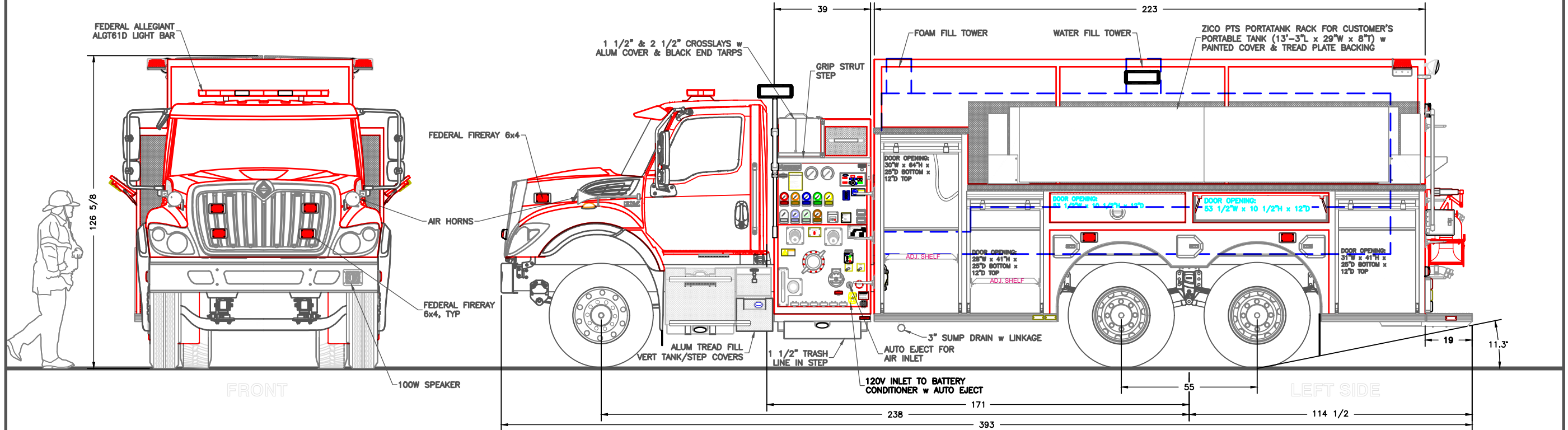


NOT SHOWN:
CONSOLE IN CAB
TRIDENT AIR PRIMER
UNISTRUTS IN L3, R2, & R3



CHASSIS: INTERNATIONAL HV613 2-DOOR
PUMP: HALE QFLO SINGLE STAGE 1250 USGPM
TANK: 3000 US GALLON POLYPROPYLENE "POLY-TANK IIE" w (ONE) 20 US GALLON FOAM CELL
FOAM: HYPRO FOAMPRO 1600

SUCTION: 1 - 6" SUCTION LEFT (NOT GATED)
1 - 6" SUCTION RIGHT (ELEC GATE)
1 - 3" TANK TO PUMP
1 - 2 1/2" LEFT

DISCHARGES: 1 - 4" RIGHT (3" VALVE)
2 - 2 1/2" LEFT
1 - 2 1/2" RIGHT
1 - 2 1/2" REAR
1 - 2 1/2" CROSSSLAY (FOAM)
1 - 2" TANK FILL

1 - 1 1/2" CROSSSLAY (FOAM)
1 - 1 1/2" TRASHLINE LEFT (FOAM)

REV	DESCRIPTION	BY	DATE
3	RELOCATED REAR DISCHARGE TO UNDER STEP PER TOM Y	TEC	2021-04-19
2	UPDATE TO MARK UP TO MATCH COA & COB APR 5, 2021	HDS	2021-04-12
1	UPDATE TO MARK UP/SHOP ORDER REVIEW	HDS	2020-10-20
0	FIRST ISSUE		

FRANKLIN
FIRE DEPARTMENT
JOB No. 21688
DRAWN BY HDS
DATE 01-23-2020
METALFAB LTD.
847 CENTRAL ST. CENTREVILLE
NB. CANADA E7K 2E8

TITLE GENERAL ARRANGEMENT

DRAWING NO. FT-11298
REV 3

-ALL ALUMINUM CONSTRUCTION - ALL DIMENSIONS ARE IN INCHES & APPROXIMATE