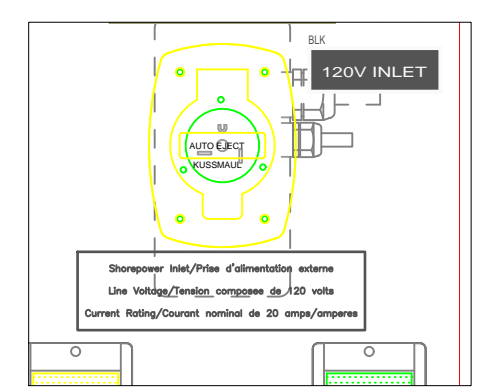
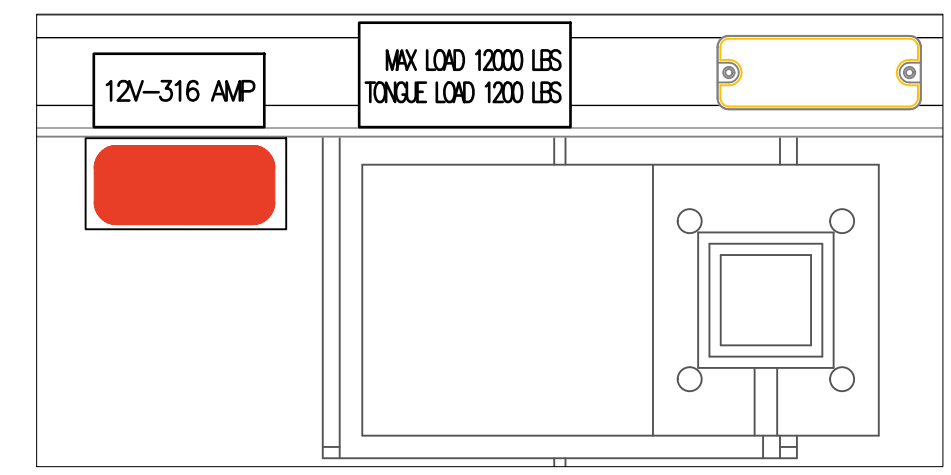
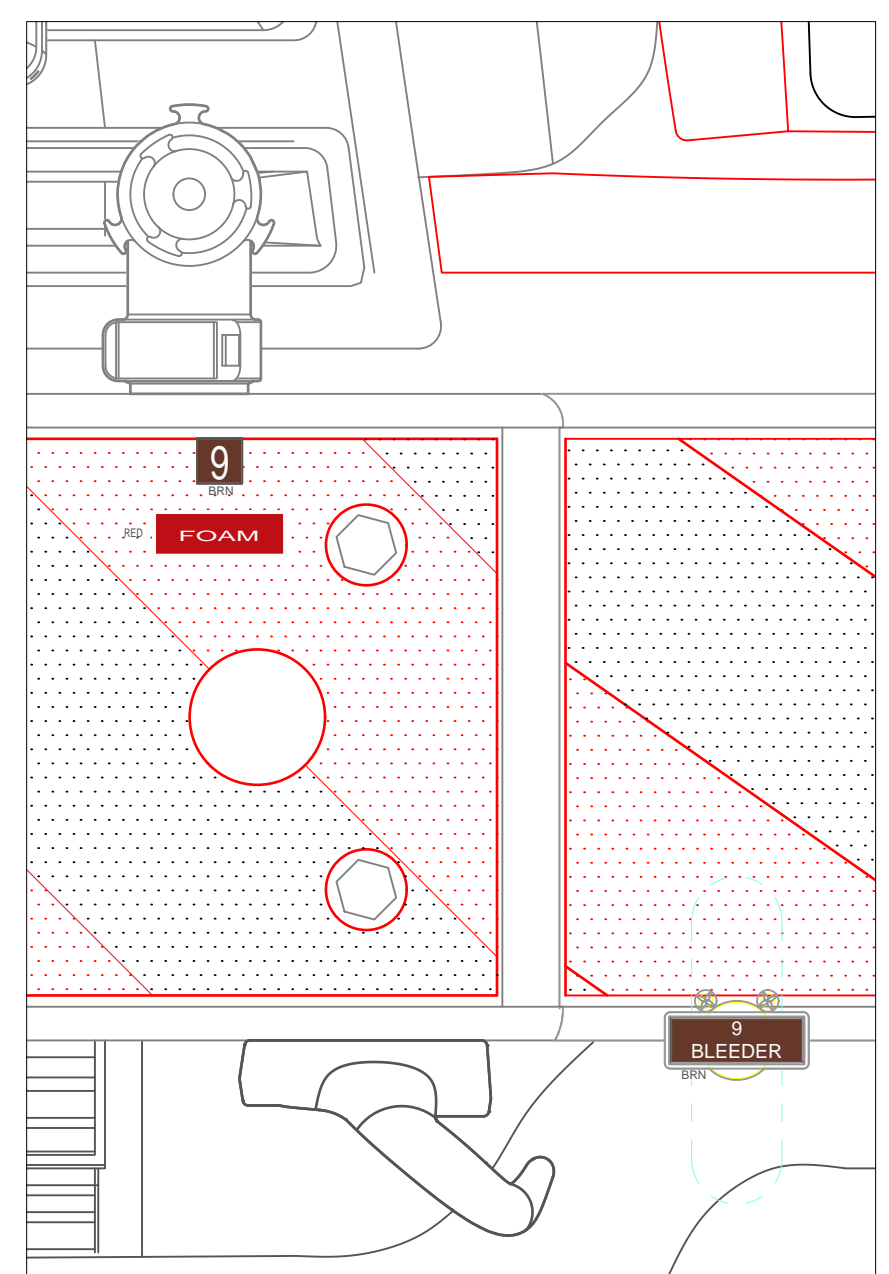
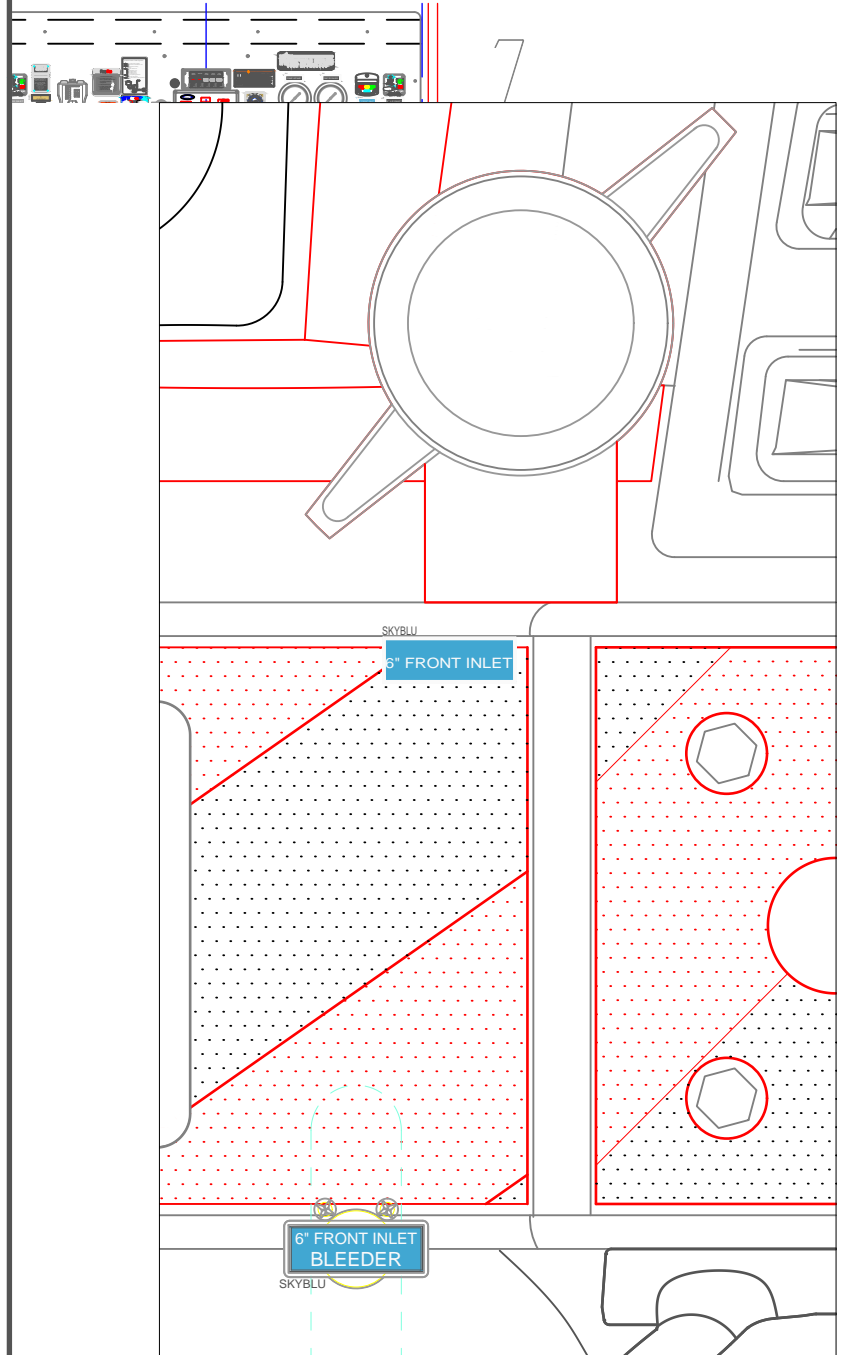
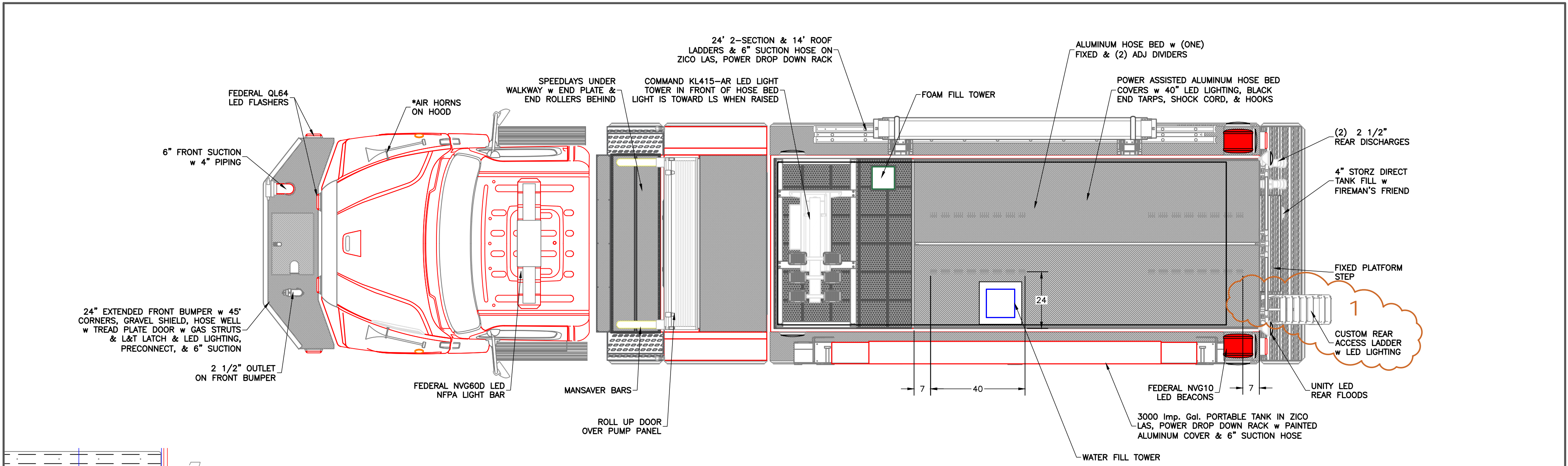


CHASSIS: FREIGHTLINER 114SD 2 DOOR	SUCTION: 1 - 6" LEFT (ELEC. GATE)	DISCHARGES: 1 - 4" RIGHT
PUMP: HALE DSD 1250 IGPM MIDSHIP	1 - 6" RIGHT (ELEC. GATE)	1 - 3" TANK FILL
TANK: 2500 Imp. Gal. POLYPROPYLENE	1 - 6" FRONT	2 - 2 1/2" LEFT
20 Imp. Gal. FOAM	(4" PIPING, ELEC. GATE)	1 - 2 1/2" RIGHT
FOAM: FOAMPRO 2001	1 - 4" TANK TO PUMP (ELEC.)	1 - 2 1/2" FRONT (FOAM)
	2 - 2 1/2" LEFT	2 - 2 1/2" REAR
	1 - 2 1/2" RIGHT	

2	UPDATE TO MATCH CHANGE ORDER D	HDS	JAN 29, 2025
1	UPDATE TO MATCH CHANGE ORDER C; UPDATE ACCESS LADDER TO CUSTOM TO MATCH PORT HASTINGS	HDS	NOV 20, 2024
0	FIRST ISSUE		
REV	DESCRIPTION	BY	DATE

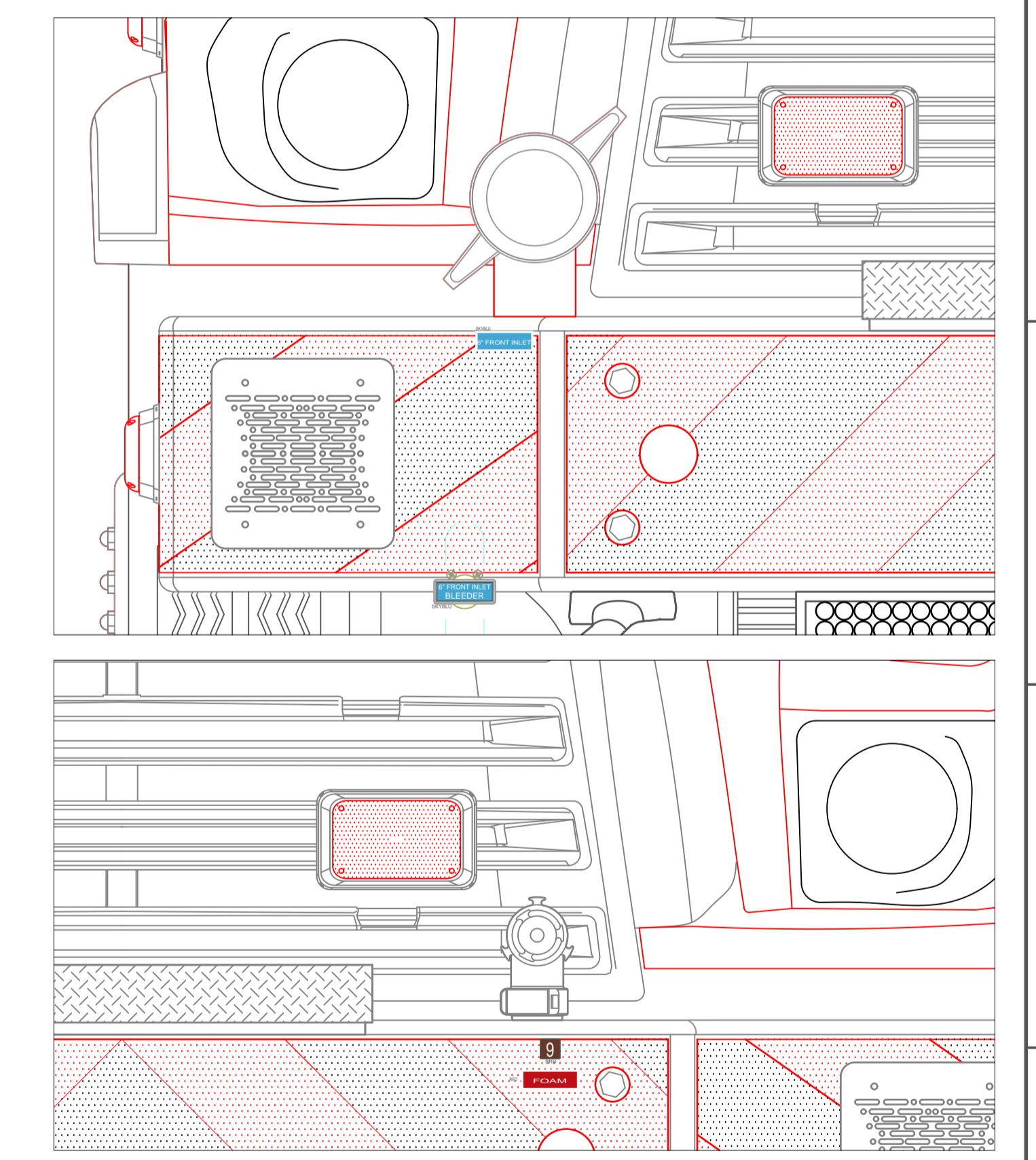
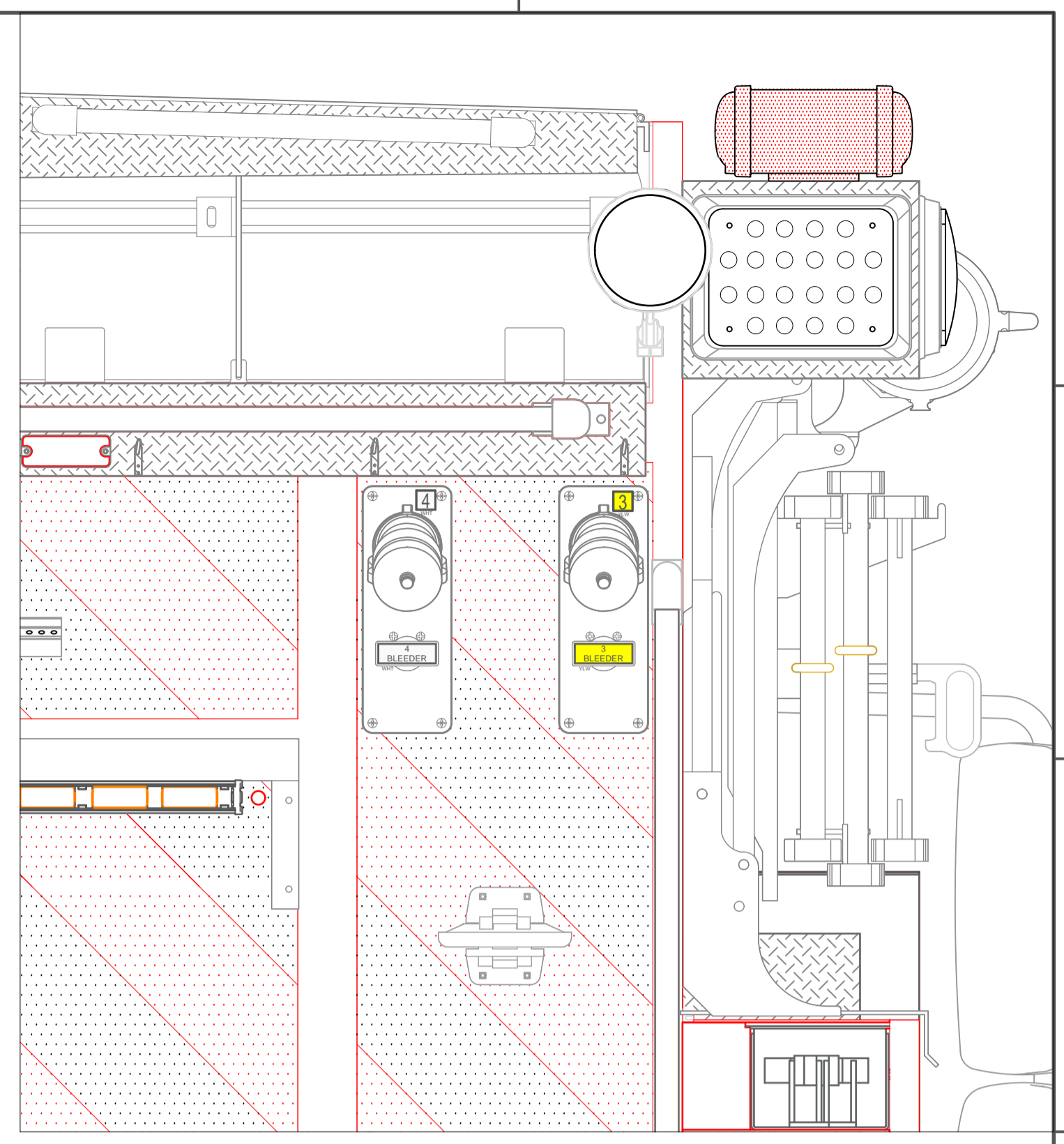
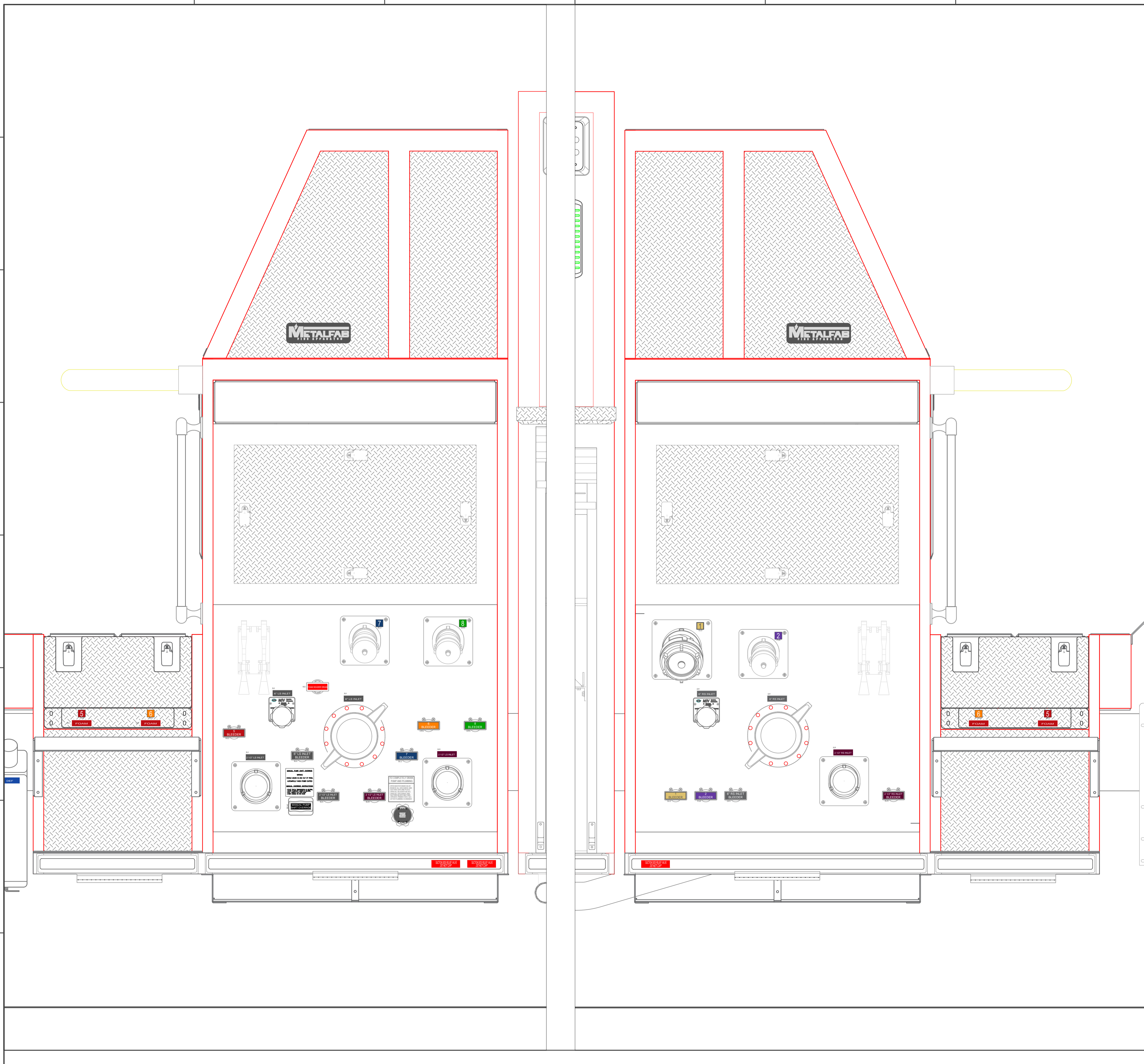
REVISIONS

ISLE MADAME FIRE DEPARTMENT	TITLE ACCESSORIES MOUNTING
JOB No. 23076	
DRAWN BY HDS	
DATE SEPT 17, 2024	
METALFAB LTD. 847 CENTRAL ST. CENTREVILLE NB. CANADA E7K 2E8	DRAWING NO. 23076-19 SHT 1 OF 4
	REV 2



REV	DESCRIPTION	BY	DATE
1	UPDATE TO MATCH CHANGE ORDER C; UPDATE ACCESS LADDER TO CUSTOM TO MATCH PORT HASTINGS	HDS	NOV 20, 2024
0	FIRST ISSUE		

ISLE MADAME FIRE DEPARTMENT		TITLE TOP VIEW	
JOB No. 23076			
DRAWN BY HDS			
DATE SEPT 17, 2024			
METALFAB LTD. 847 CENTRAL ST. CENTREVILLE NB. CANADA E7K 2E8		DRAWING NO. 23076-19 SHT 2 OF 4	REV 2



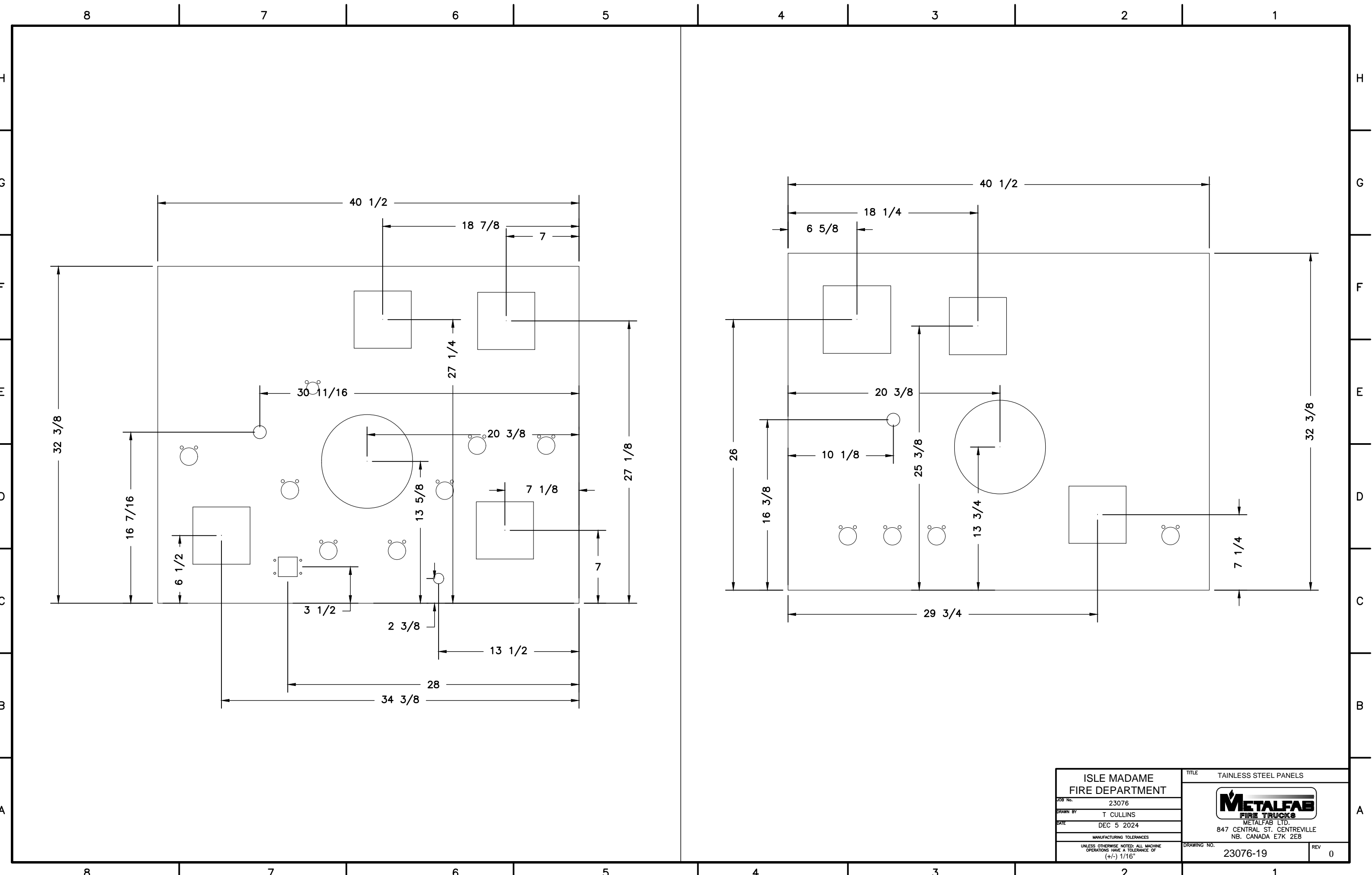
ISLE MADAME
FIRE DEPARTMENT


JOB No. 23076
DRAWN BY HDS
DATE SEPT 17 2024

METALFAB LTD.
847 CENTRAL ST. CENTREVILLE
NB. CANADA E7K 2E8

TITLE PUMP PANEL LAYOUT

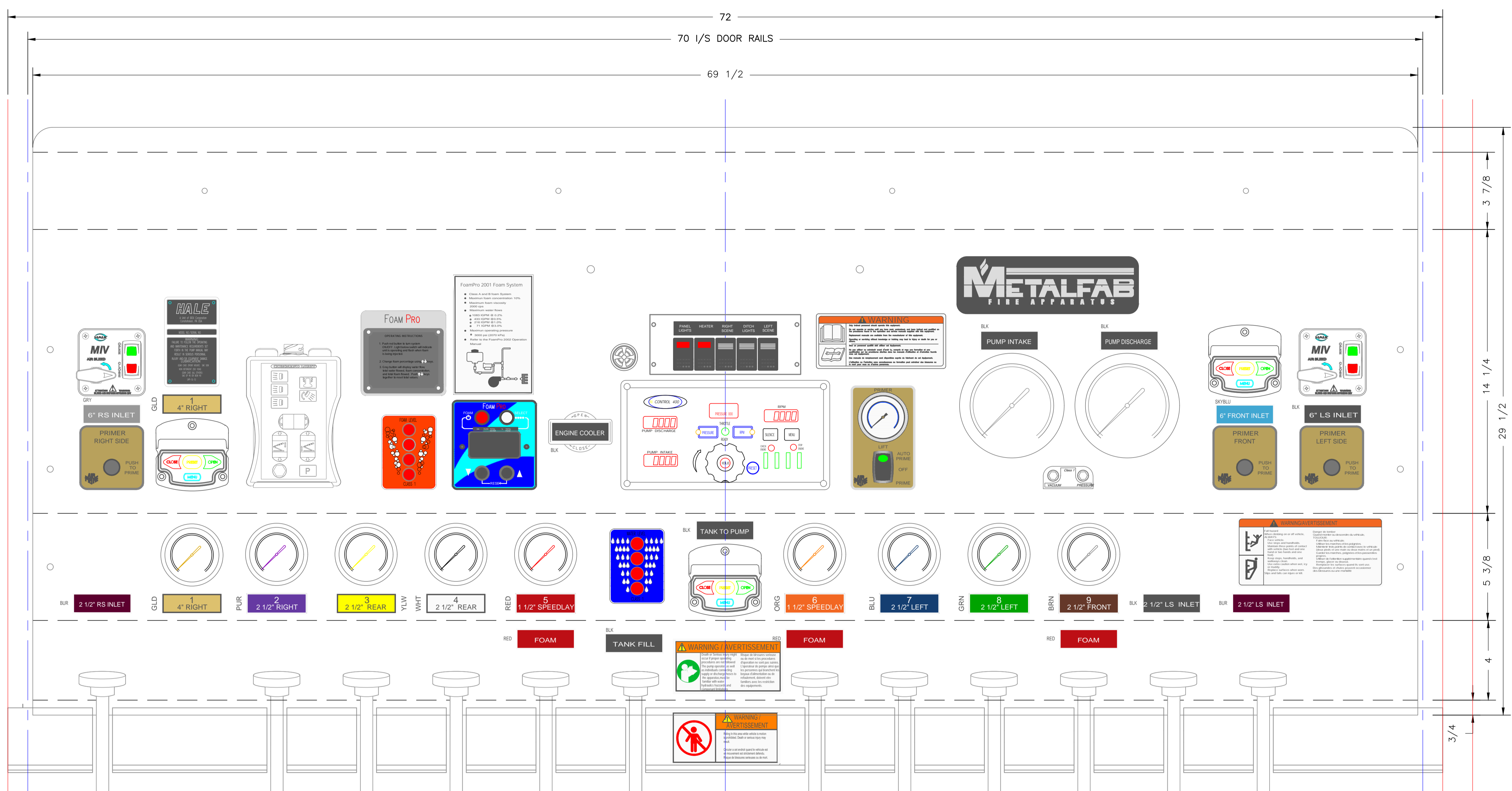
DRAWING NO. 23076-19 REV 2



ISLE MADAME FIRE DEPARTMENT		TITLE TAINLESS STEEL PANELS	
JOB No.	23076	 METALFAB LTD. 847 CENTRAL ST. CENTREVILLE NB. CANADA E7K 2E8	
DRAWN BY	T CULLINS		
DATE	DEC 5 2024		
MANUFACTURING TOLERANCES		DRAWING NO.	23076-19
UNLESS OTHERWISE NOTED: ALL MACHINE OPERATIONS HAVE A TOLERANCE OF (+/-) 1/16"		REV	0

8 7 6 5 4 3 2 1

H G F E D C B A



ISLE MADAME FIRE DEPARTMENT		TITLE OPERATORS PANEL LAYOUT	
JOB No.	23076		
DRAWN BY	HDS		
DATE	SEPT 17 2024		
METALFAB LTD. 847 CENTRAL ST. CENTREVILLE NB. CANADA E7K 2E8		DRAWING NO.	23076-19
		REV	2

8 7 6 5 4 3 2 1