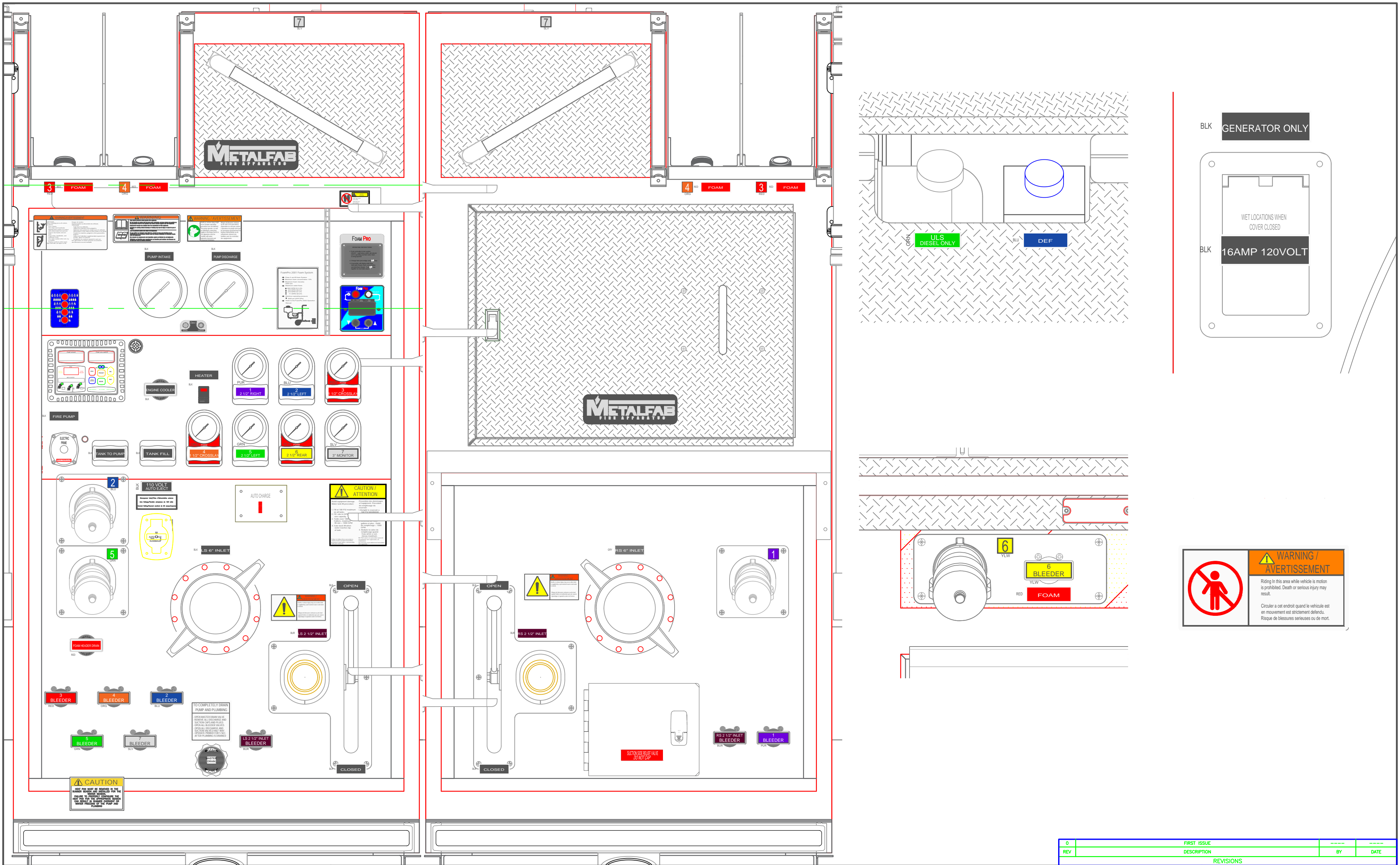


CHASSIS: FREIGHTLINER M2 PLUS 4 DOOR
 PUMP: WATEROUS CS 1050 IGPM SPLIT SHAFT
 TANK: 1000 Imp. Gal. POLYPROPYLENE
 1 - 30 Imp. Gal. FOAM CELL
 FOAM: FOAM PRO 2001

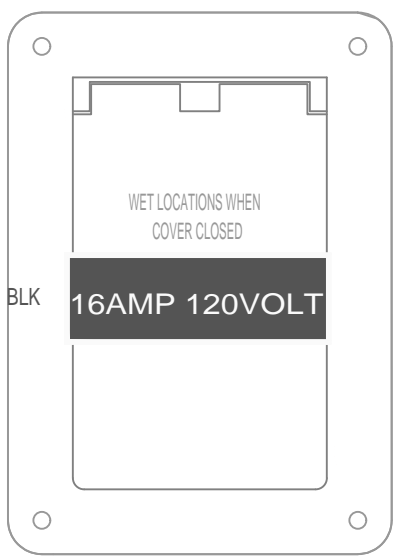
SUCTION: 1 - 6" LEFT (NO GATE)
 1 - 6" RIGHT (NO GATE)
 1 - 3" TANK TO PUMP
 1 - 2 1/2" LEFT
 1 - 2 1/2" RIGHT

DISCHARGES: 1 - 3" MONITOR
 2 - 2 1/2" LEFT
 1 - 2 1/2" REAR (FOAM)
 1 - 2 1/2" RIGHT
 1 - 2" TANK FILL
 2 - 1 1/2" CROSSLAYS (FOAM)

REV	DESCRIPTION	BY	DATE
0	FIRST ISSUE		
REVISIONS			
AVONDALE, NL FIRE DEPARTMENT		TITLE ACCESSORIES MOUNTING	
JOB No. 23039			
DRAWN BY HDS			
DATE SEPTEMBER 30, 2024		DRAWING NO. 23039-19 PG 1 OF 2	
METALFAB LTD. 847 CENTRAL ST. CENTREVILLE NB. CANADA E7K 2E8		REV 0	



BLK GENERATOR ONLY



WARNING / AVERTISSEMENT

Riding in this area while vehicle is motion is prohibited. Death or serious injury may result.

Circuler a cet endroit quand le véhicule est en mouvement est strictement interdits. Risque de blessures sérieuses ou de mort.

0	FIRST ISSUE	---	---
REV	DESCRIPTION	BY	DATE
REVISIONS			
AVONDALE, NL FIRE DEPARTMENT		OPERATOR'S PANELS	
JOB No. 23039			
DRAWN BY HDS			
DATE SEPTEMBER 30, 2024		DRAWING NO. 23039-19 PG 2 OF 2	
METALFAB LTD. 847 CENTRAL ST. CENTREVILLE NB. CANADA E7K 2E8		REV 0	