

CHASSIS: FREIGHTLINER M2 PLUS 4 DOOR  
 PUMP: WATEROUS CS 1050 IGPM SPLIT SHAFT  
 TANK: 1000 Imp. Gal. POLYPROPYLENE  
 1-30 Imp. Gal. FOAM CELL  
 FOAM: FOAMPRO 2001

SUCTION: 1 - 6" LEFT (NO GATE)  
 1 - 6" RIGHT (NO GATE)  
 1 - 3" TANK TO PUMP  
 1 - 2 1/2" LEFT  
 1 - 2 1/2" RIGHT

DISCHARGES: 1 - 3" MONITOR  
 2 - 2 1/2" LEFT  
 1 - 2 1/2" RIGHT  
 1 - 2 1/2" REAR

1 - 2" TANK FILL  
 2 - 1 1/2" CROSSLAYS

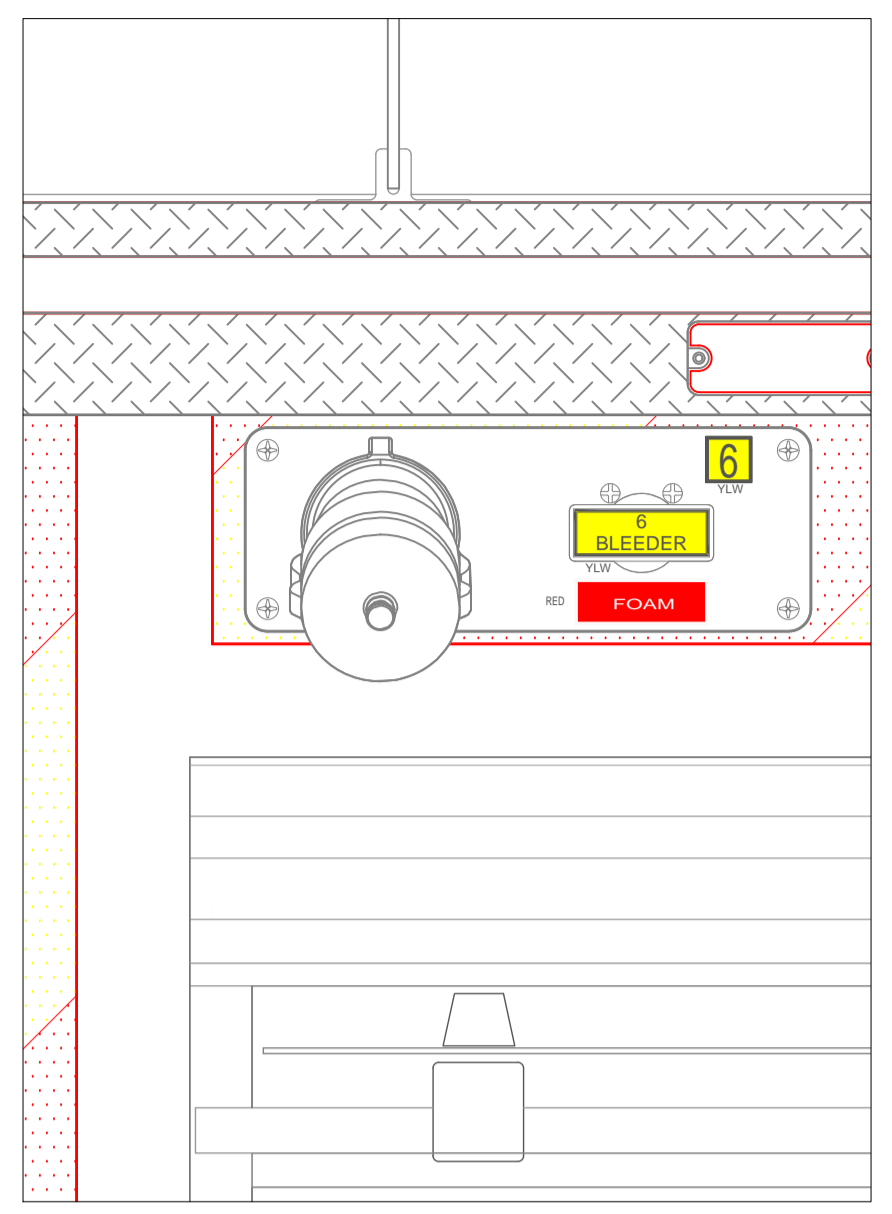
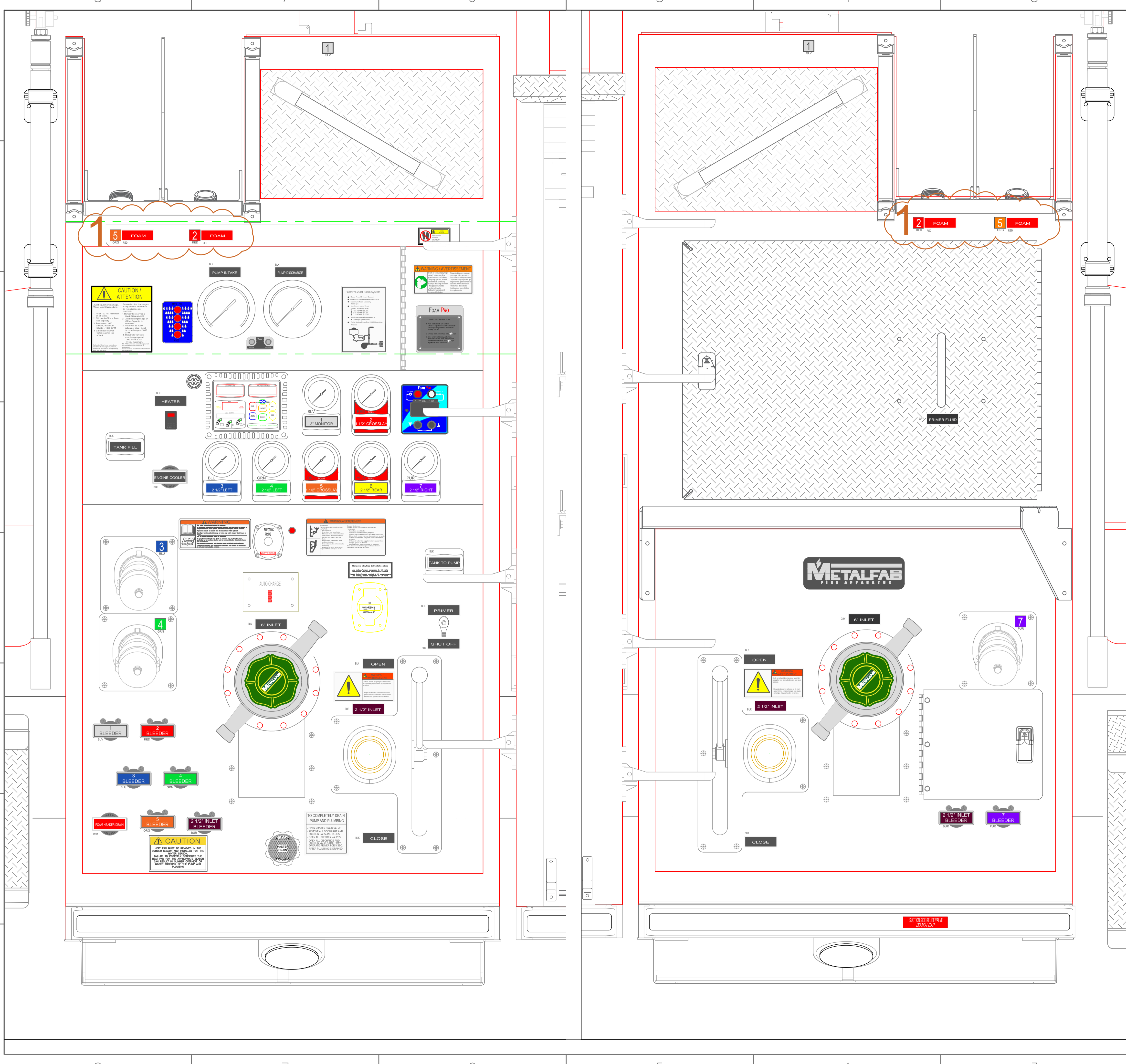
1	UPDATE TO CHANGE LINKAGE POSITION OF #2 & #5, 1 1/2" CROSSLAYS TO MATCH ACTUAL, AS SHOWN	HDS	JUN 4, 2025
0	FIRST ISSUE		
REV	DESCRIPTION	BY	DATE

COW HEAD  
 FIRE DEPARTMENT  
 JOB No. 23126  
 DRAWN BY HDS  
 DATE APRIL 9, 2025  
 METALFAB LTD.  
 847 CENTRAL ST. CENTREVILLE  
 NB. CANADA E7K 2E8


TITLE GENERAL ARRANGEMENT

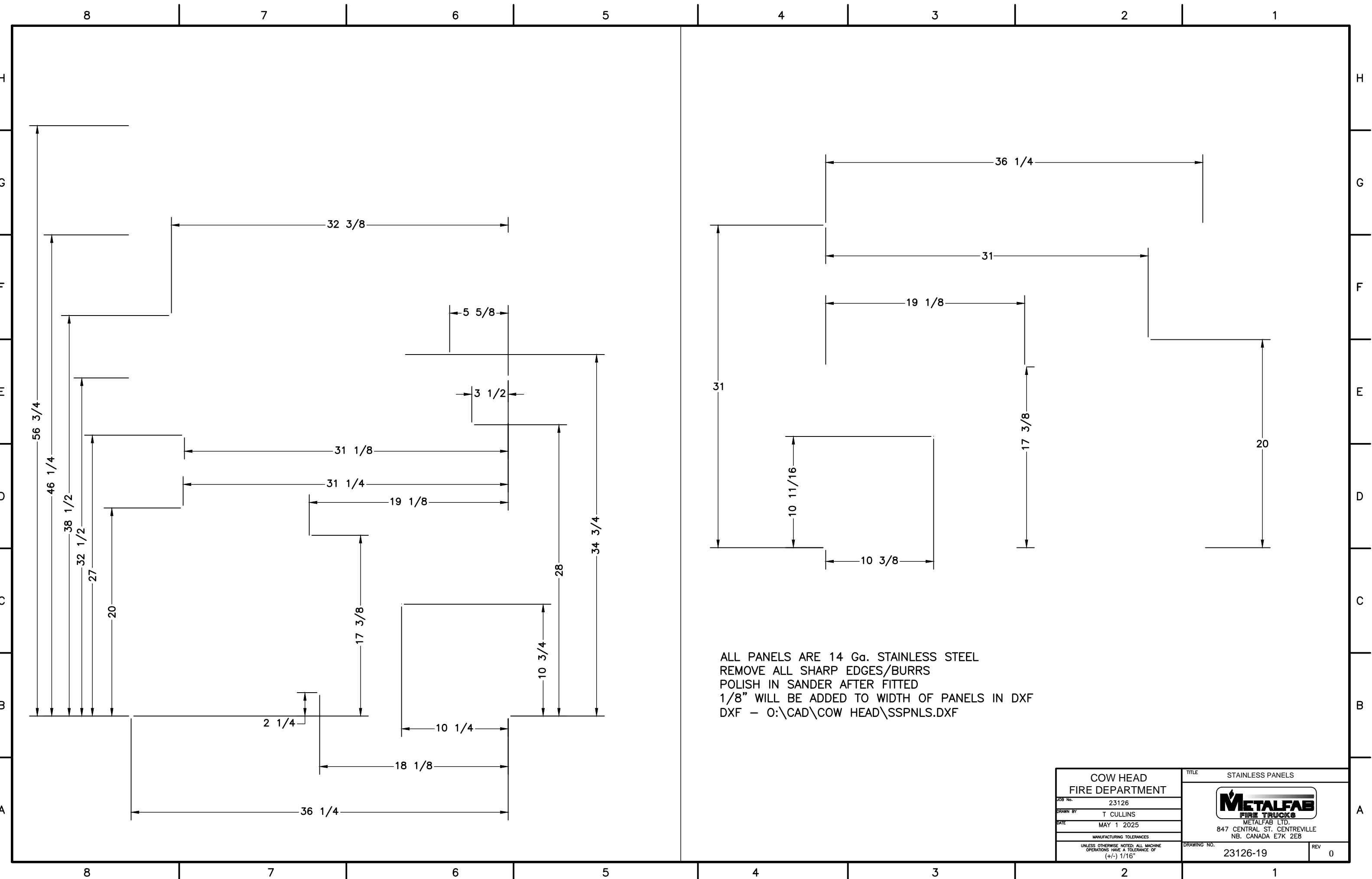
DRAWING NO. 23126-19 PG 1 OF 2  
 REV 1

-ALL ALUMINUM CONSTRUCTION - ALL DIMENSIONS ARE IN INCHES & APPROXIMATE




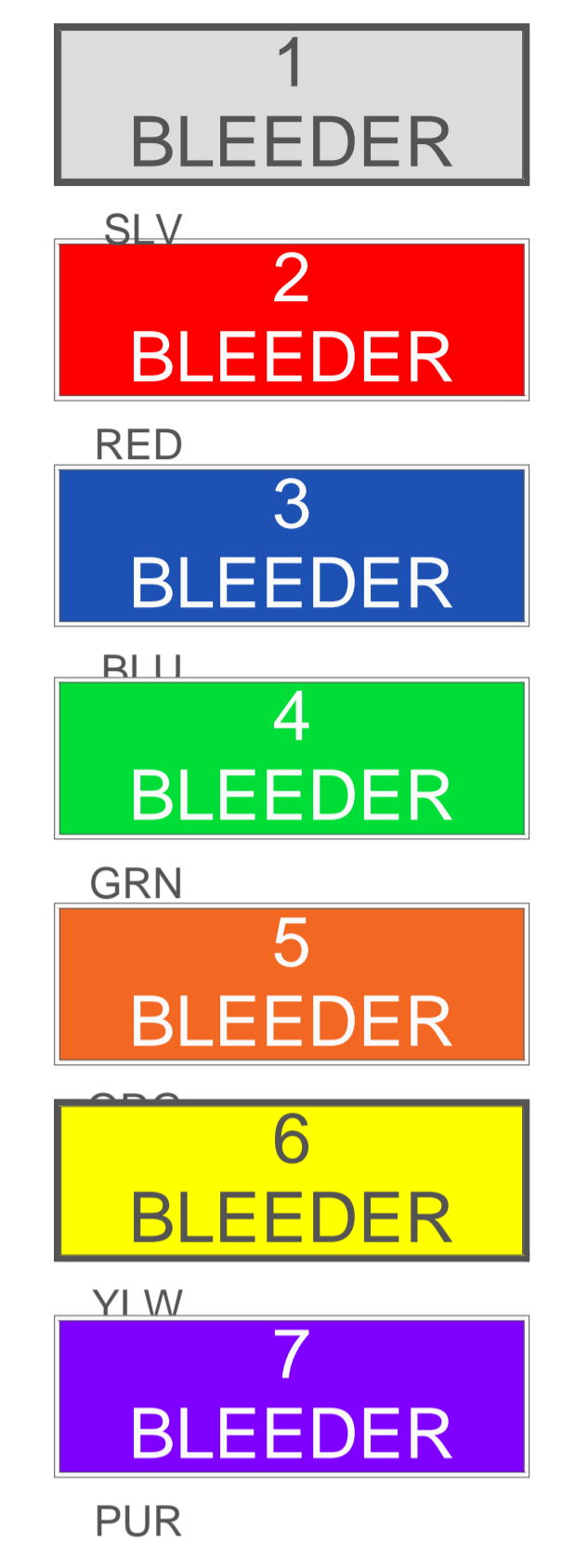
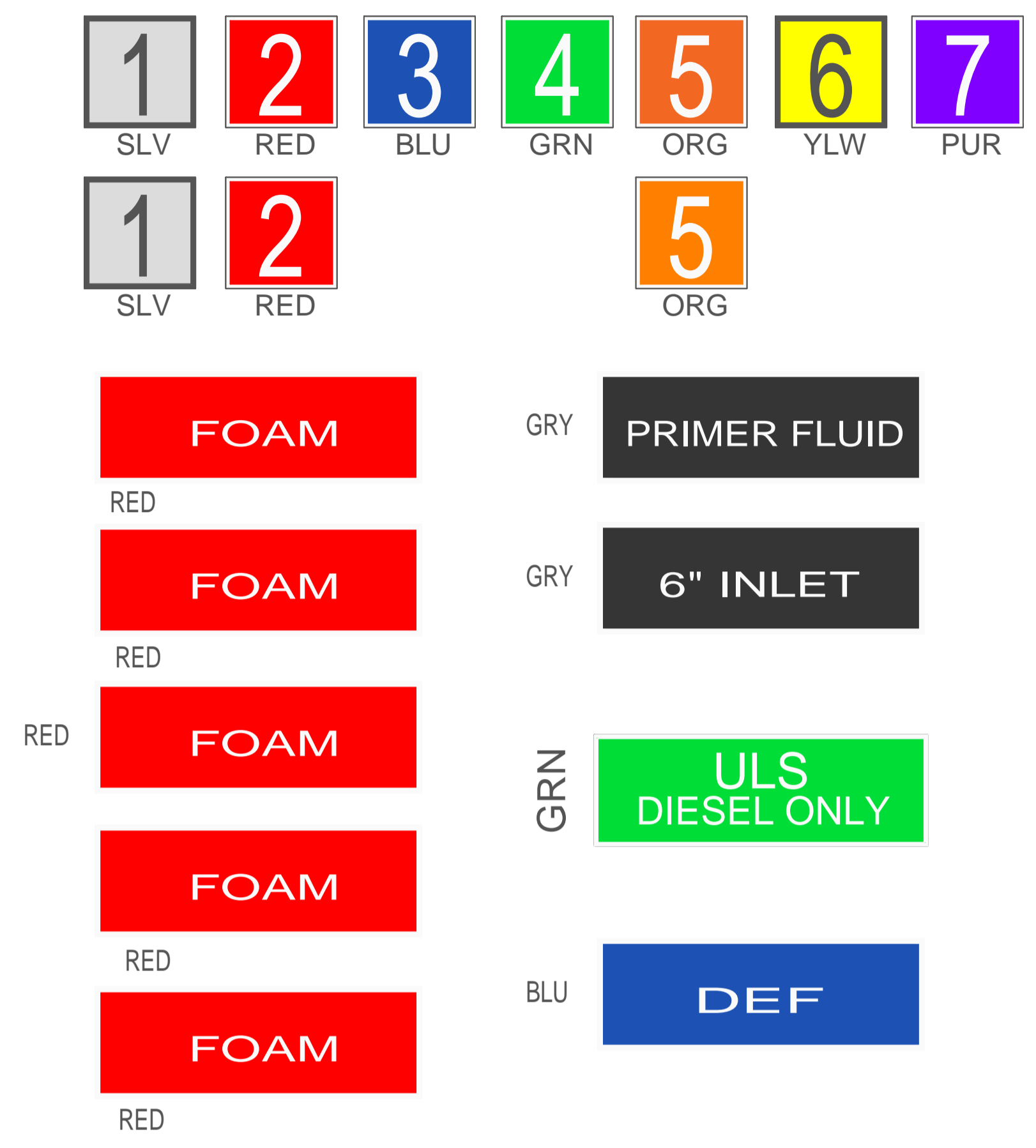
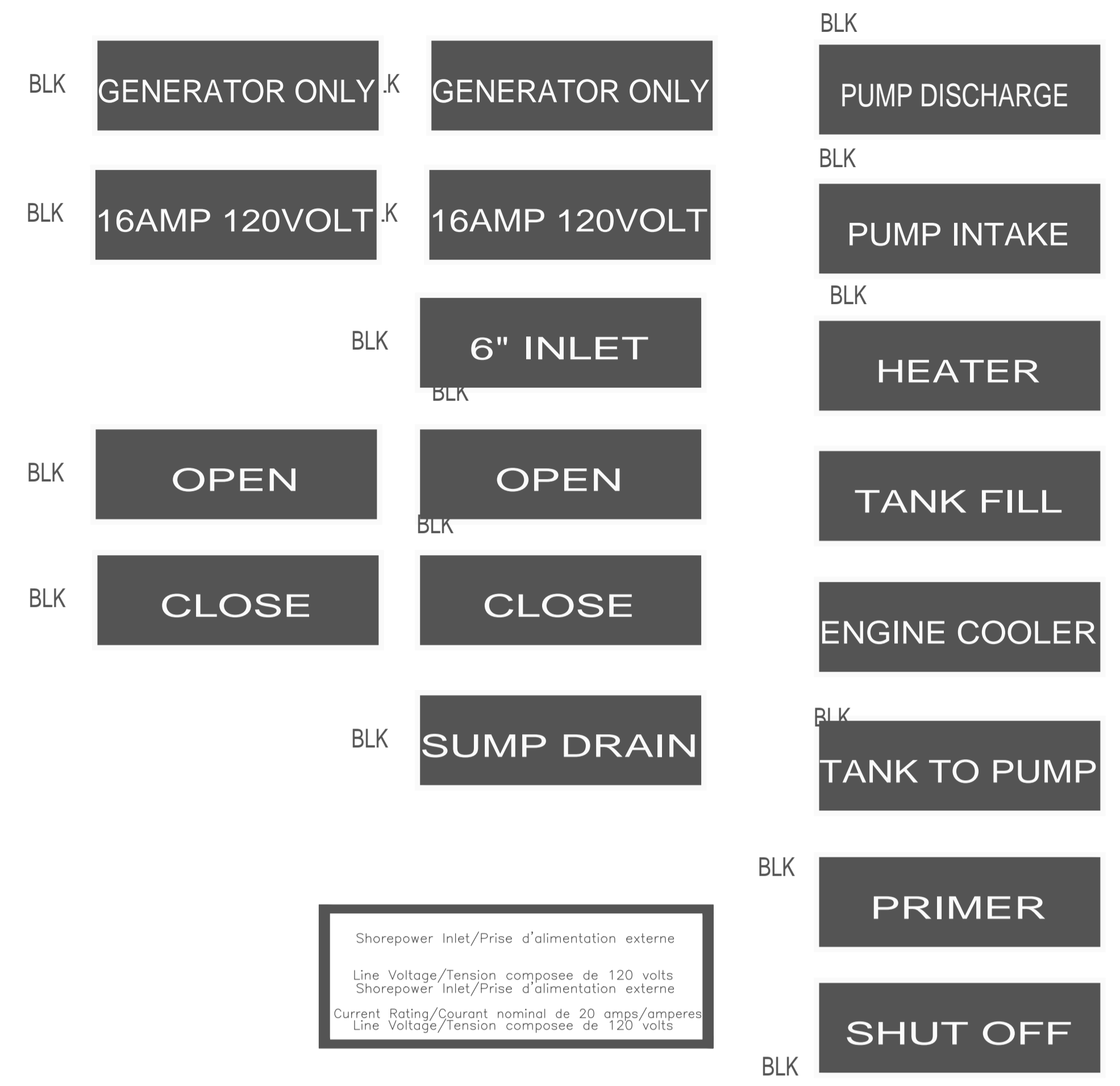
**COW HEAD  
FIRE DEPARTMENT**  
 JOB No. 23126  
 DRAWN BY HDS  
 DATE APRIL 9 2025  
 METALFAB LTD.  
 847 CENTRAL ST. CENTREVILLE  
 NB. CANADA E7K 2E8

TITLE **PUMP PANEL LAYOUT**  
  
 DRAWING NO. 23126-19  
 REV 1

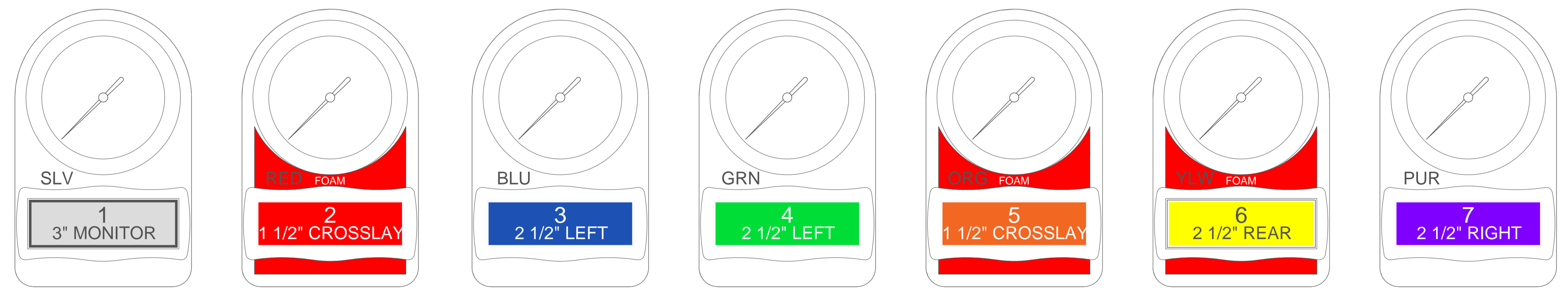
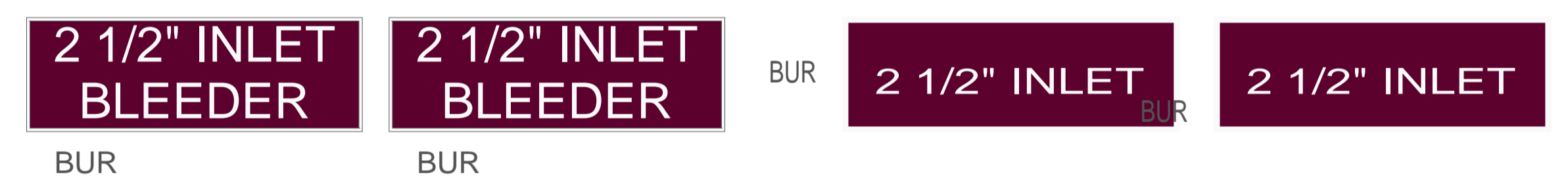


ALL PANELS ARE 14 Ga. STAINLESS STEEL  
 REMOVE ALL SHARP EDGES/BURRS  
 POLISH IN SANDER AFTER FITTED  
 1/8" WILL BE ADDED TO WIDTH OF PANELS IN DXF  
 DXF - 0:\CAD\COW HEAD\SSPNLS.DXF

COW HEAD FIRE DEPARTMENT		TITLE STAINLESS PANELS	
JOB No.	23126	 METALFAB LTD. 847 CENTRAL ST. CENTREVILLE NB. CANADA E7K 2E8	
DRAWN BY	T CULLINS		
DATE	MAY 1 2025		
MANUFACTURING TOLERANCES			
UNLESS OTHERWISE NOTED: ALL MACHINE OPERATIONS HAVE A TOLERANCE OF (+/-) 1/16"		DRAWING NO.	23126-19
		REV	0



Shorepower Inlet/Prise d'alimentation externe  
 Line Voltage/Tension composee de 120 volts  
 Shorepower Inlet/Prise d'alimentation externe  
 Current Rating/Courant nominal de 20 amps/amperes  
 Line Voltage/Tension composee de 120 volts



COW HEAD FIRE DEPARTMENT		TITLE PUMP PANEL LAYOUT	
JOB No.	23126		
DRAWN BY	HDS		
DATE	APRIL 9 2025		
METALFAB LTD. 847 CENTRAL ST. CENTREVILLE NB. CANADA E7K 2E8		DRAWING NO.	23126-19
		REV	0