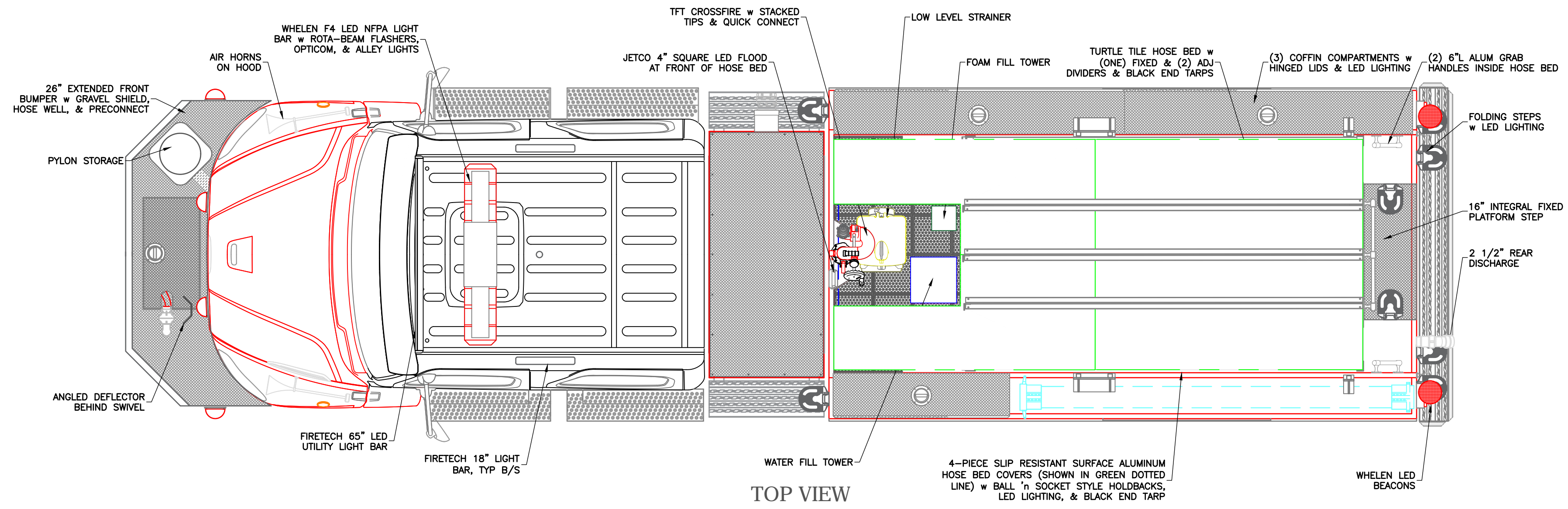
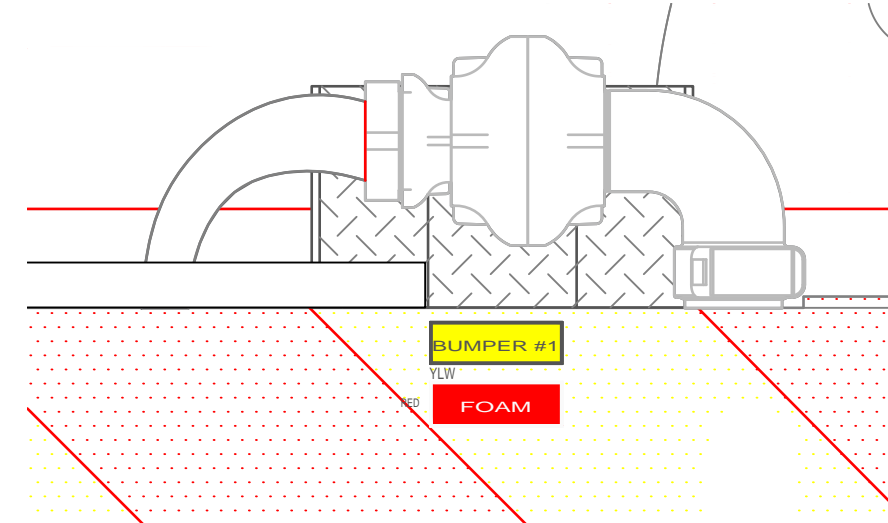


<p>CHASSIS: FREIGHTLINER M2 112 4 DOOR          PUMP: HALE DSD 1250 IGPM SPLIT SHAFT          TANK: 1000 IMP GAL POLYPROPYLENE          1 - 40 IMP GAL FOAM CELL          FOAM: FOAMPRO 2002</p>	<p>SUCTION: 1 - 6" LEFT          1 - 6" RIGHT (ELECTRIC GATE)          1 - 6" REAR (MANUAL GATE)          1 - 3" TANK TO PUMP (4" PLUMB)          1 - 2 1/2" LEFT          1 - 2 1/2" RIGHT</p>	<p>DISCHARGES: 1 - 4" RIGHT (4" PLUMB)          1 - 3" MONITOR (HANDWHEEL)          2 - 2 1/2" LEFT          1 - 2 1/2" RIGHT          1 - 2 1/2" REAR (FOAM)</p>	<p>1 - 2 1/2" TRASHLINE (FOAM)          1 - 2" TANK FILL          2 - 1 1/2" SPEEDLAYS (FOAM)</p>	<table border="1"> <tr> <th>REV</th> <th>DESCRIPTION</th> <th>BY</th> <th>DATE</th> </tr> <tr> <td>2</td> <td>UPDATE TO MATCH CHANGES FROM CUSTOMER VISIT OF JULY 11</td> <td>HDS</td> <td>JULY 14, 2025</td> </tr> <tr> <td>1</td> <td>CHANGED SOME SPACING ON REAR TO ACCOMMODATE STEP SURFACES</td> <td>HDS</td> <td>APR 10, 2025</td> </tr> <tr> <td>0</td> <td>FIRST ISSUE</td> <td></td> <td></td> </tr> </table>	REV	DESCRIPTION	BY	DATE	2	UPDATE TO MATCH CHANGES FROM CUSTOMER VISIT OF JULY 11	HDS	JULY 14, 2025	1	CHANGED SOME SPACING ON REAR TO ACCOMMODATE STEP SURFACES	HDS	APR 10, 2025	0	FIRST ISSUE			<p>FREDERICTON          FIRE DEPARTMENT</p> <p>JOB No. 22940          DRAWN BY HDS          DATE MARCH 24, 2025</p> <p>METALFAB LTD.          847 CENTRAL ST. CENTREVILLE          NB. CANADA E7K 2E8</p>	<p>TITLE ACCESSORIES MOUNTING</p> <p><b>METALFAB</b>          FIRE TRUCKS</p> <p>DRAWING NO. 22940-19 PG 1 OF 3          REV 2</p>
REV	DESCRIPTION	BY	DATE																			
2	UPDATE TO MATCH CHANGES FROM CUSTOMER VISIT OF JULY 11	HDS	JULY 14, 2025																			
1	CHANGED SOME SPACING ON REAR TO ACCOMMODATE STEP SURFACES	HDS	APR 10, 2025																			
0	FIRST ISSUE																					

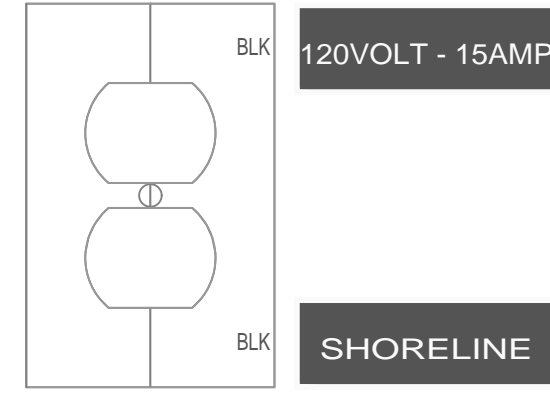
\*INCLUDED w CHASSIS



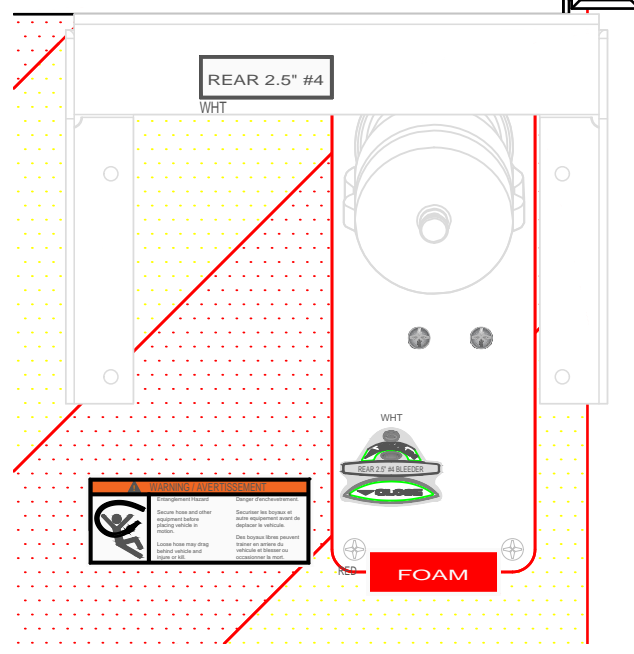
TOP VIEW



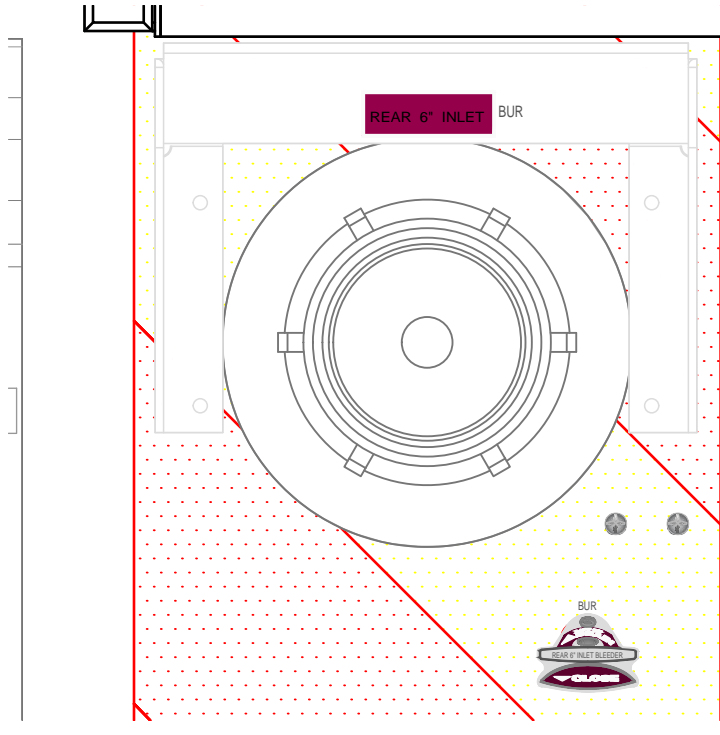
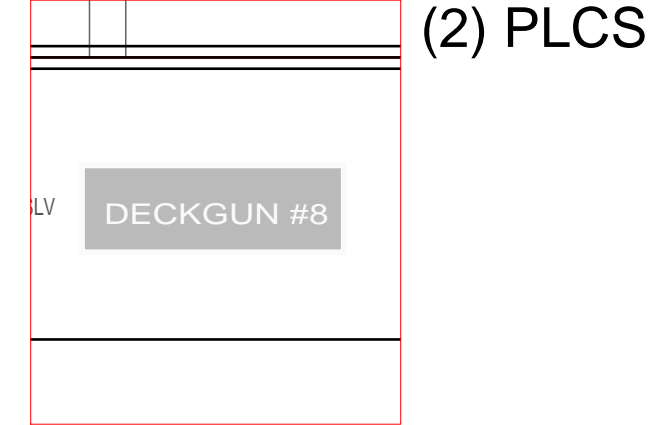
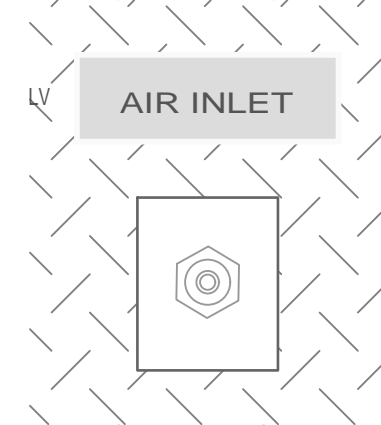
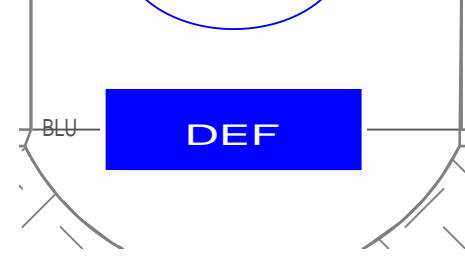
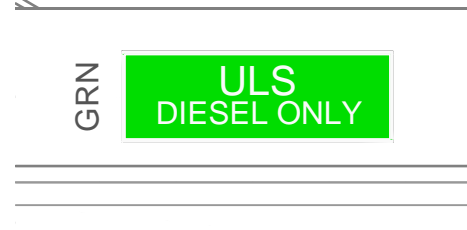
FRONT



C2 & C5



REAR

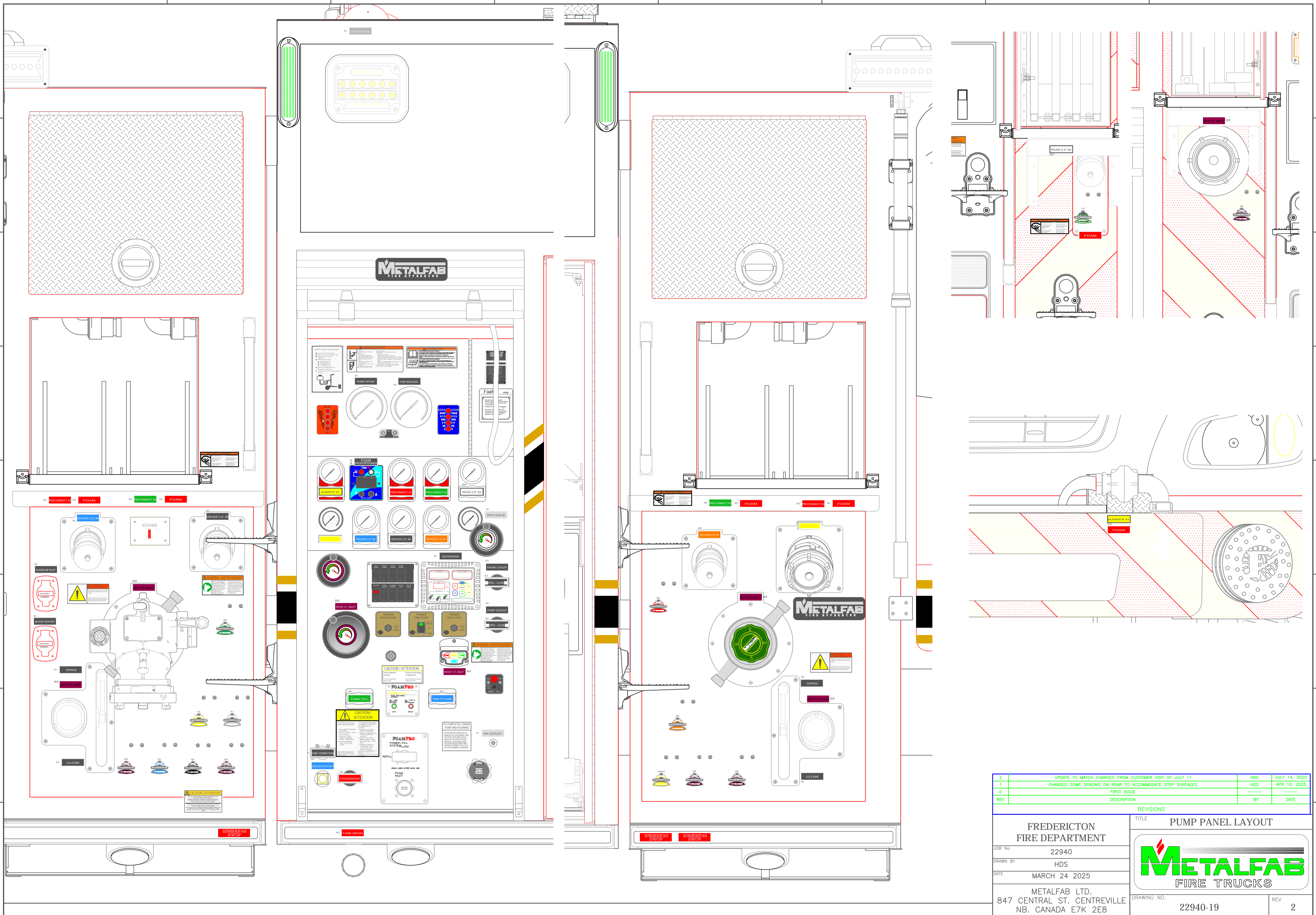


REAR


REV	DESCRIPTION	BY	DATE
2	UPDATE TO MATCH CHANGES FROM CUSTOMER VISIT OF JULY 11	HDS	JULY 14, 2025
1	CHANGED SOME SPACING ON REAR TO ACCOMMODATE STEP SURFACES	HDS	APR 10, 2025
0	FIRST ISSUE		
	REVISIONS		

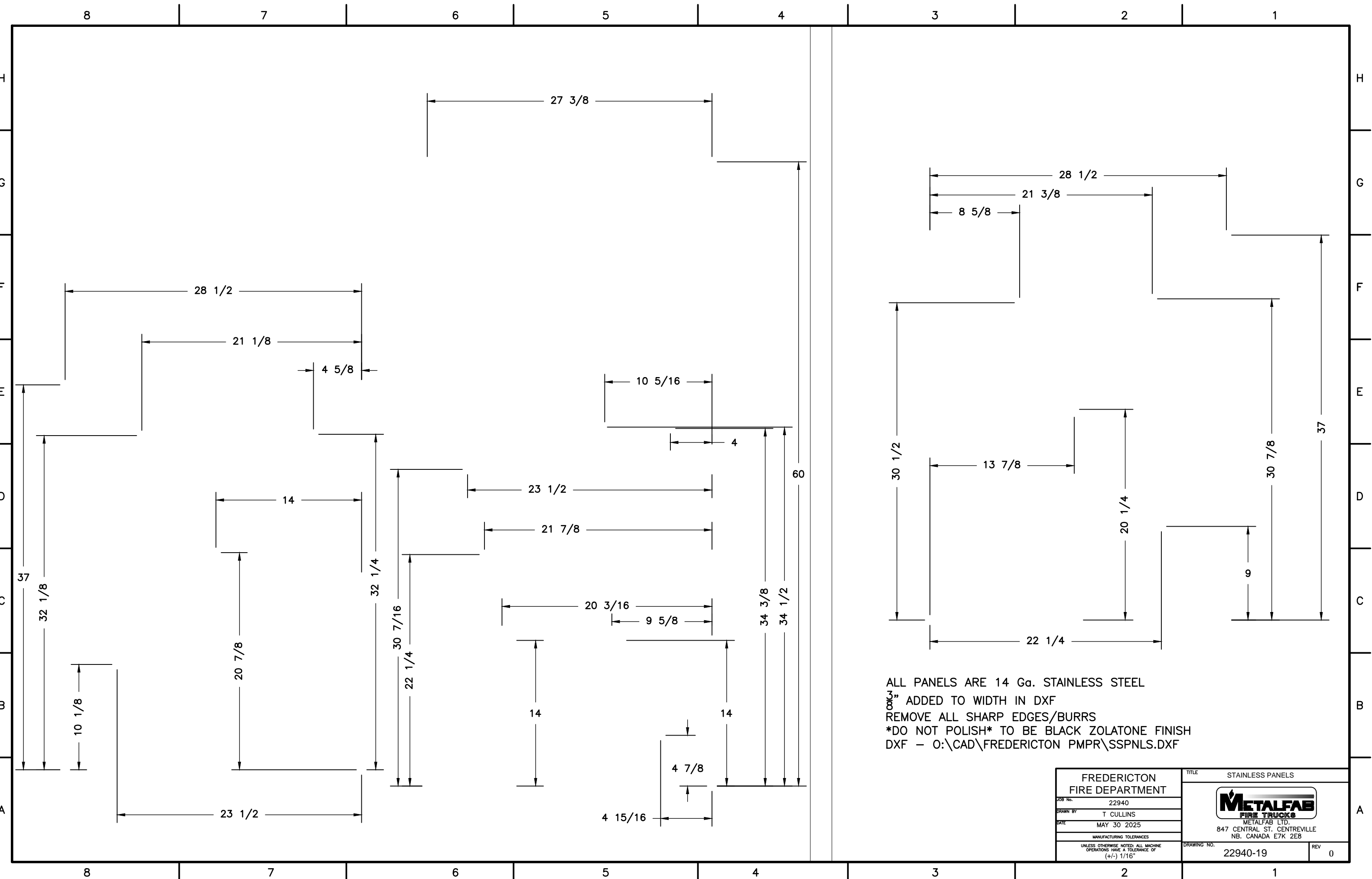
\*INCLUDED w CHASSIS

FREDERICTON FIRE DEPARTMENT JOB No. 22940 DRAWN BY HDS DATE MARCH 24, 2025 METALFAB LTD. 847 CENTRAL ST. CENTREVILLE NB. CANADA E7K 2E8		TITLE TOP VIEW  DRAWING NO. 22940-19 PG 2 OF 3 REV 2
--	--	---




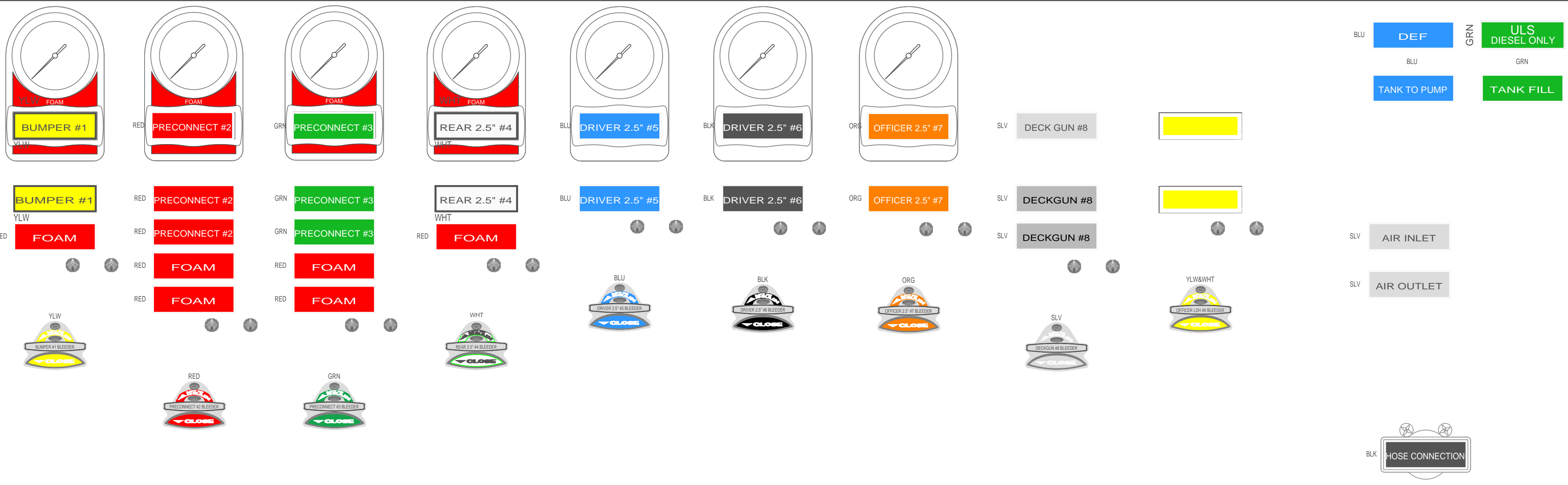
2	UPDATE TO MATCH CHANGES FROM CUSTOMER VISIT OF JULY 11	HDS	JULY 14, 2025
1	CHANGED SOME SPACING ON REAR TO ACCOMMODATE STEP SURFACES	HDS	APR 10, 2025
0	FIRST ISSUE		
REV	DESCRIPTION	BY	DATE

<b>FREDERICTON FIRE DEPARTMENT</b>		TITLE <b>PUMP PANEL LAYOUT</b>	
JOB No.	22940		
DRAWN BY	HDS		
DATE	MARCH 24 2025		
METALFAB LTD. 847 CENTRAL ST. CENTREVILLE NB. CANADA E7K 2E8		DRAWING NO.	22940-19
		REV	2

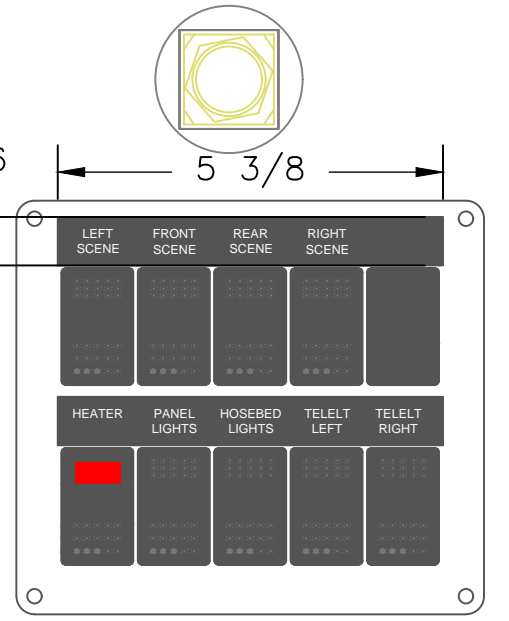
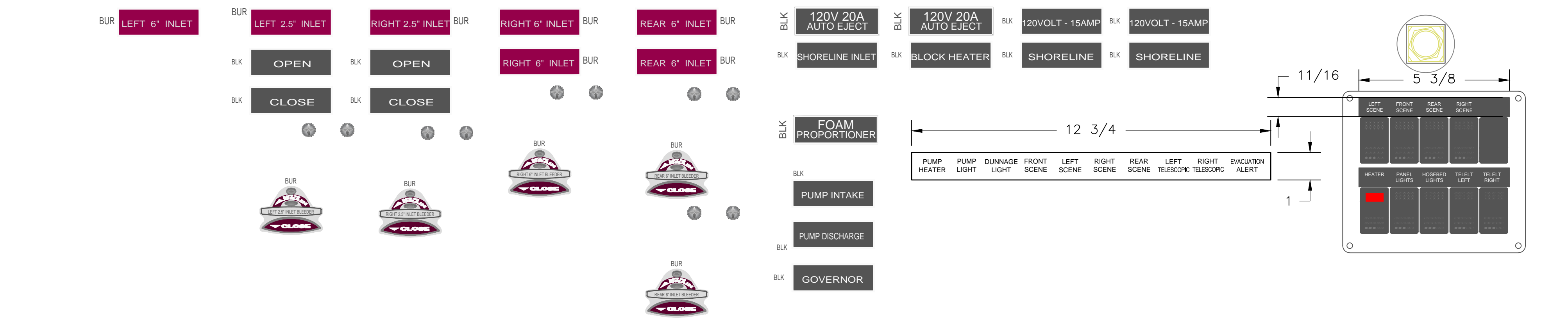


ALL PANELS ARE 14 Ga. STAINLESS STEEL  
 3/16" ADDED TO WIDTH IN DXF  
 REMOVE ALL SHARP EDGES/BURRS  
 \*DO NOT POLISH\* TO BE BLACK ZOLATONE FINISH  
 DXF - O:\CAD\FREDERICTON PMPR\SSPNLS.DXF

FREDERICTON FIRE DEPARTMENT		TITLE STAINLESS PANELS	
JOB No.	22940	 METALFAB LTD. 847 CENTRAL ST. CENTREVILLE NB. CANADA E7K 2E8	
DRAWN BY	T CULLINS		
DATE	MAY 30 2025		
MANUFACTURING TOLERANCES		DRAWING NO.	22940-19
UNLESS OTHERWISE NOTED: ALL MACHINE OPERATIONS HAVE A TOLERANCE OF (+/-) 1/16"		REV	0



BLU DEF  
 BLU TANK TO PUMP  
 GRN ULS DIESEL ONLY  
 GRN TANK FILL



BLK ENGINE COOLER  
 BLK PUMP COOLER  
 BLU DECON OUTLET  
 BLK OPEN -- CLOSE  
 BLK OPEN -- CLOSE  
 BLK OPEN -- CLOSE

SUCTION SIDE RELIEF VALVE DO NOT CAP  
 SUCTION SIDE RELIEF VALVE DO NOT CAP  
 SUCTION SIDE RELIEF VALVE DO NOT CAP  
 RED FOAM HEADER DRAIN  
 RED TANK DRAIN

REV	DESCRIPTION	BY	DATE
0	FIRST ISSUE		
REVISIONS			

\*INCLUDED w CHASSIS

FREDERICTON  
 FIRE DEPARTMENT  
 JOB No. 22940  
 DRAWN BY HDS  
 DATE MARCH 24, 2025  
 METALFAB LTD.  
 847 CENTRAL ST. CENTREVILLE  
 NB. CANADA E7K 2E8

TITLE ICI TAGS w VERBIAGE  
  
 DRAWING NO. 22940-19 VERBIAGE  
 REV 0