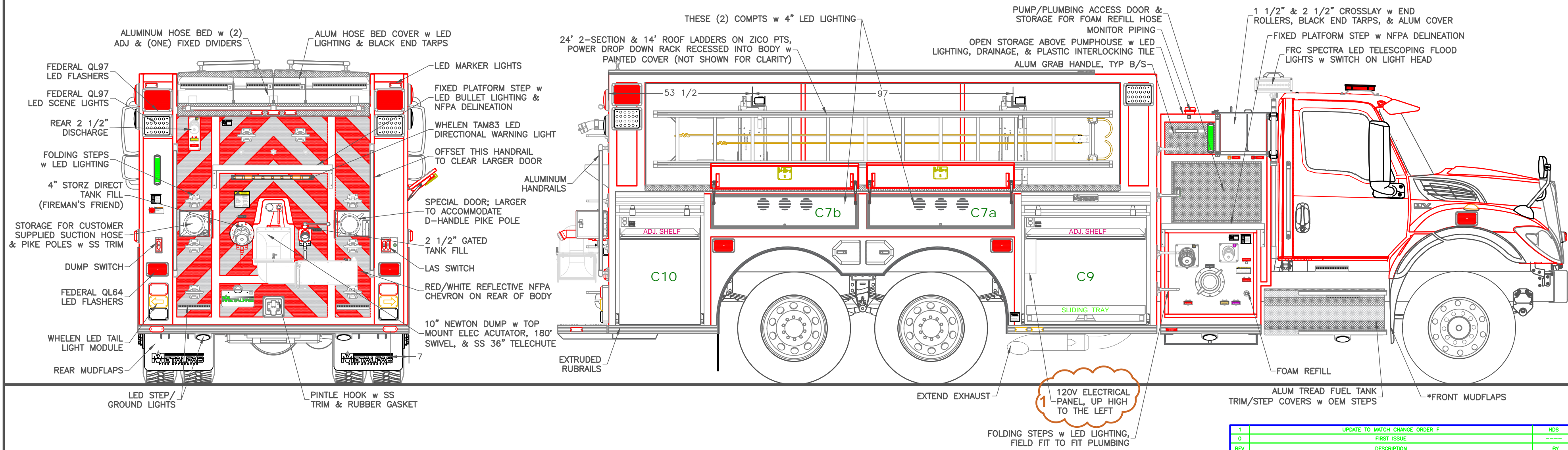
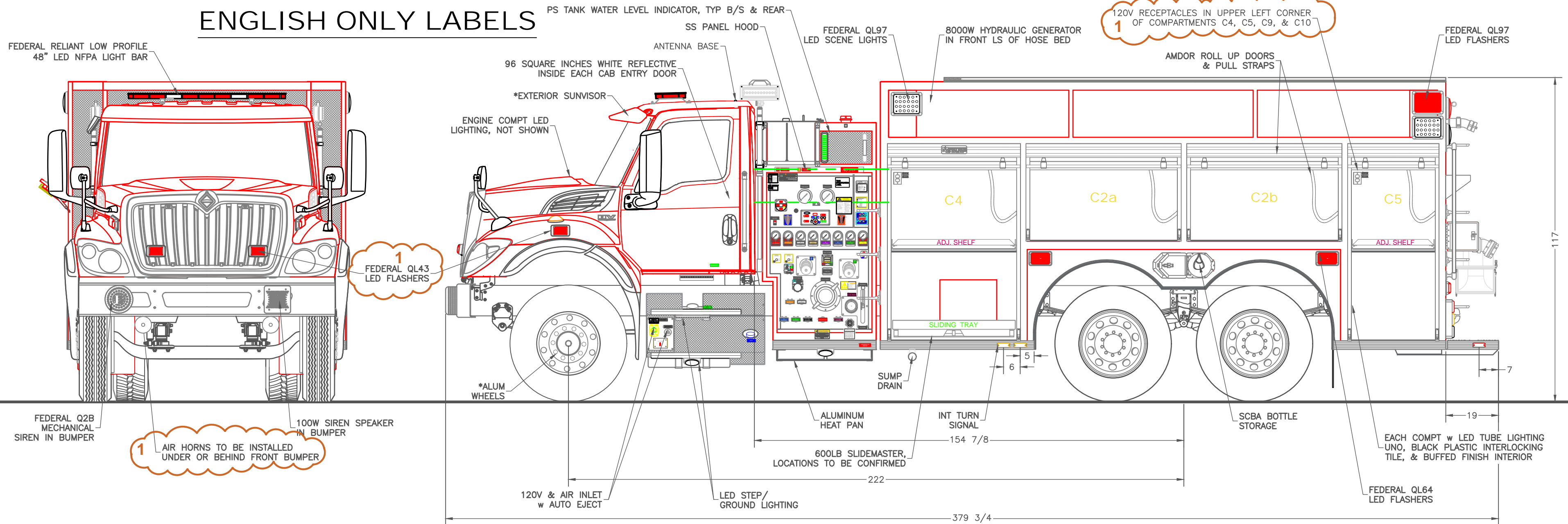


# ENGLISH ONLY LABELS



CHASSIS: INTERNATIONAL HV607 2 DOOR  
PUMP: HALE QMAX 1500 USGPM SPLIT SHAFT  
TANK: 2500 US Gal. POLYPROPYLENE  
1 - 20 US Gal. FOAM CELL  
FOAM: FOAMPRO 2001

SUCTION: 1 - 6" LEFT (ELECTRIC GATE)  
1 - 6" RIGHT (NO GATE)  
1 - 4" TANK TO PUMP (ELECTRIC)  
1 - 2 1/2" LEFT

DISCHARGES: 1 - 4" RIGHT (3" PIPING)  
1 - 3" MONITOR  
2 - 2 1/2" LEFT  
1 - 2 1/2" RIGHT  
1 - 2 1/2" REAR (FOAM)

1 - 2 1/2" CROSSLAY (FOAM)  
1 - 2" TANK FILL  
1 - 1 1/2" CROSSLAY (FOAM)

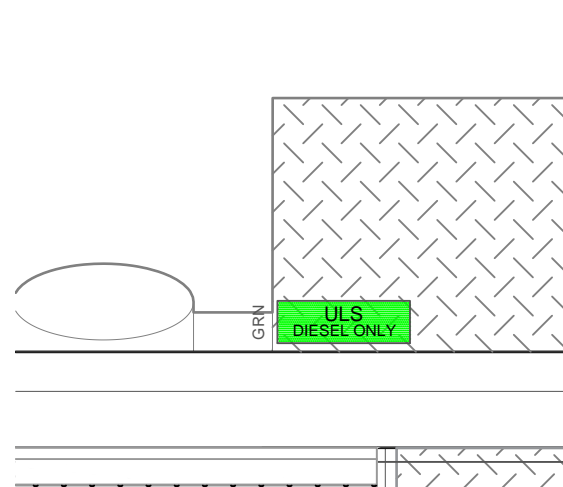
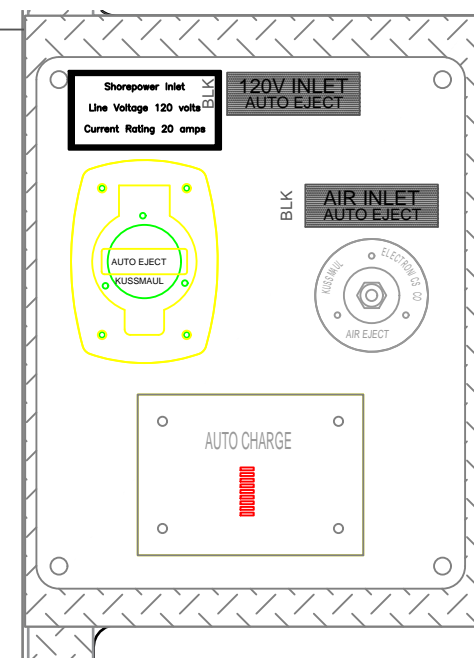
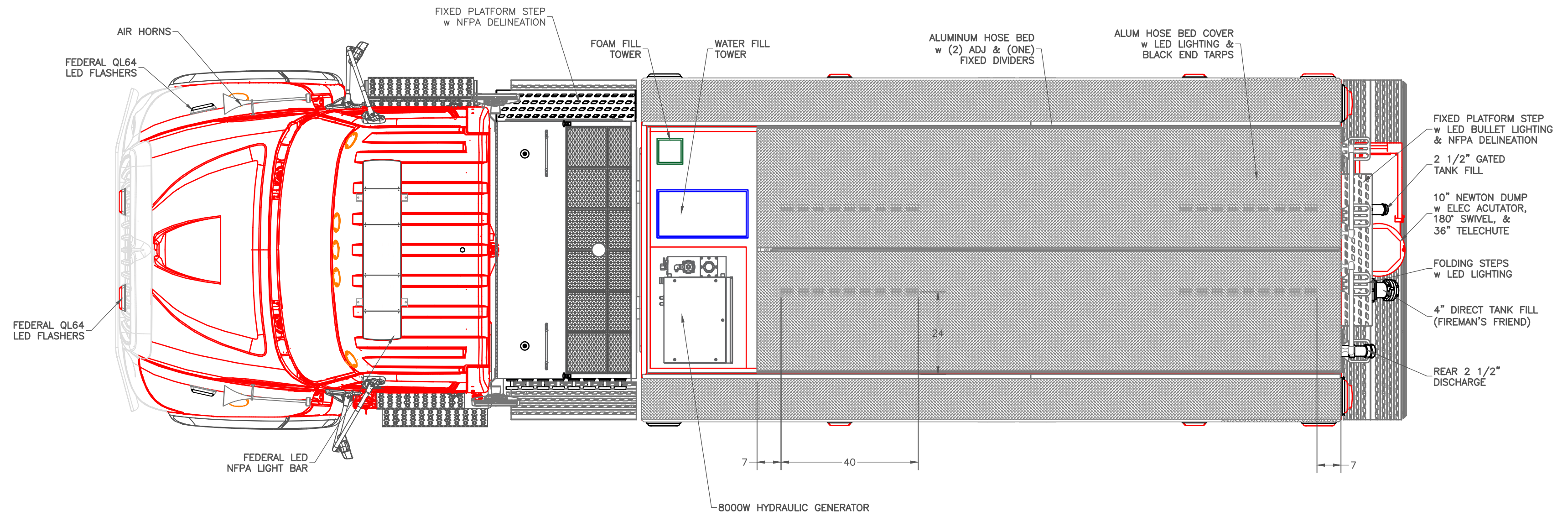
REV	DESCRIPTION	BY	DATE
1	UPDATE TO MATCH CHANGE ORDER F	hds	FEB 27, 2025
0	FIRST ISSUE		

REVISIONS	
TITLE	GENERAL ARRANGEMENT
JOB No.	22398
DRAWN BY	hds
DATE	FEBRUARY 3, 2025
METALFAB LTD. 847 CENTRAL ST. CENTREVILLE NB. CANADA E7K 2E8	
DRAWING NO.	22398-19 pg 1 of 3
REV	1

-ALL ALUMINUM CONSTRUCTION - ALL DIMENSIONS ARE IN INCHES & APPROXIMATE

# ENGLISH ONLY LABELS



**WARNING / ATTENTION**

Exhaust gets extremely HOT without warning.

KEEP AWAY from exhaust gas. Do NOT Touch pipes or parts. Do not park near flammable objects.

Hot metal and gas may burn skin or start fires.

**WARNING**

Fall hazard  
When climbing on or off vehicle, ALWAYS:

- Face vehicle.
- Use steps and handholds.
- Maintain three points of contact with vehicle: two feet and one hand or two hands and one foot.
- Keep steps, handholds, and walkways clean.
- Use extra caution when wet, icy or muddy.
- Replace surfaces when worn.

Slips and falls can injure or kill.

**WARNING**

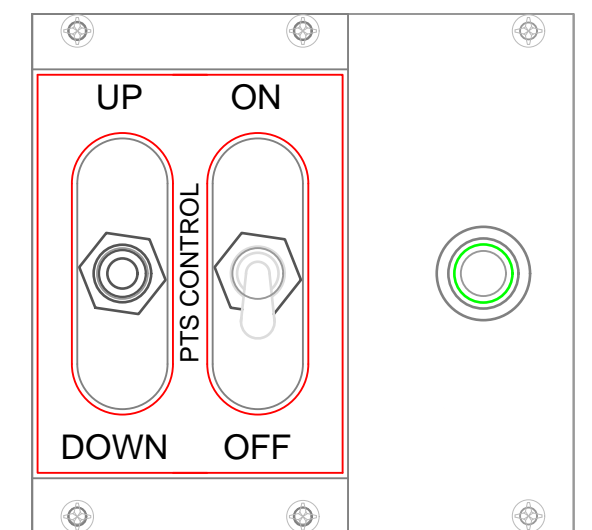
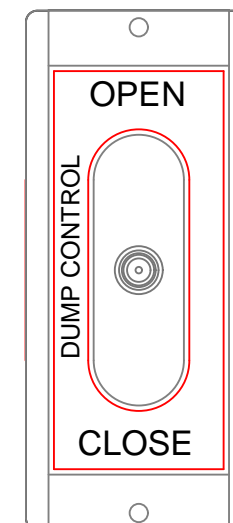
Riding in this area while vehicle is motion is prohibited.

Death or serious injury may result.

**WARNING**

Entanglement Hazard  
Secure hose and other equipment before placing vehicle in motion.

Loose hose may drag behind vehicle and injure or kill.



-ALL ALUMINUM CONSTRUCTION - ALL DIMENSIONS ARE IN INCHES & APPROXIMATE

REV	DESCRIPTION	BY	DATE
1	UPDATE TO MATCH CHANGE ORDER F	HDS	FEB 27, 2025
0	FIRST ISSUE		
REV	DESCRIPTION	BY	DATE

LAMOINE  
FIRE DEPARTMENT

JOB No. 22398

DRAWN BY hds

DATE FEBRUARY 3, 2025

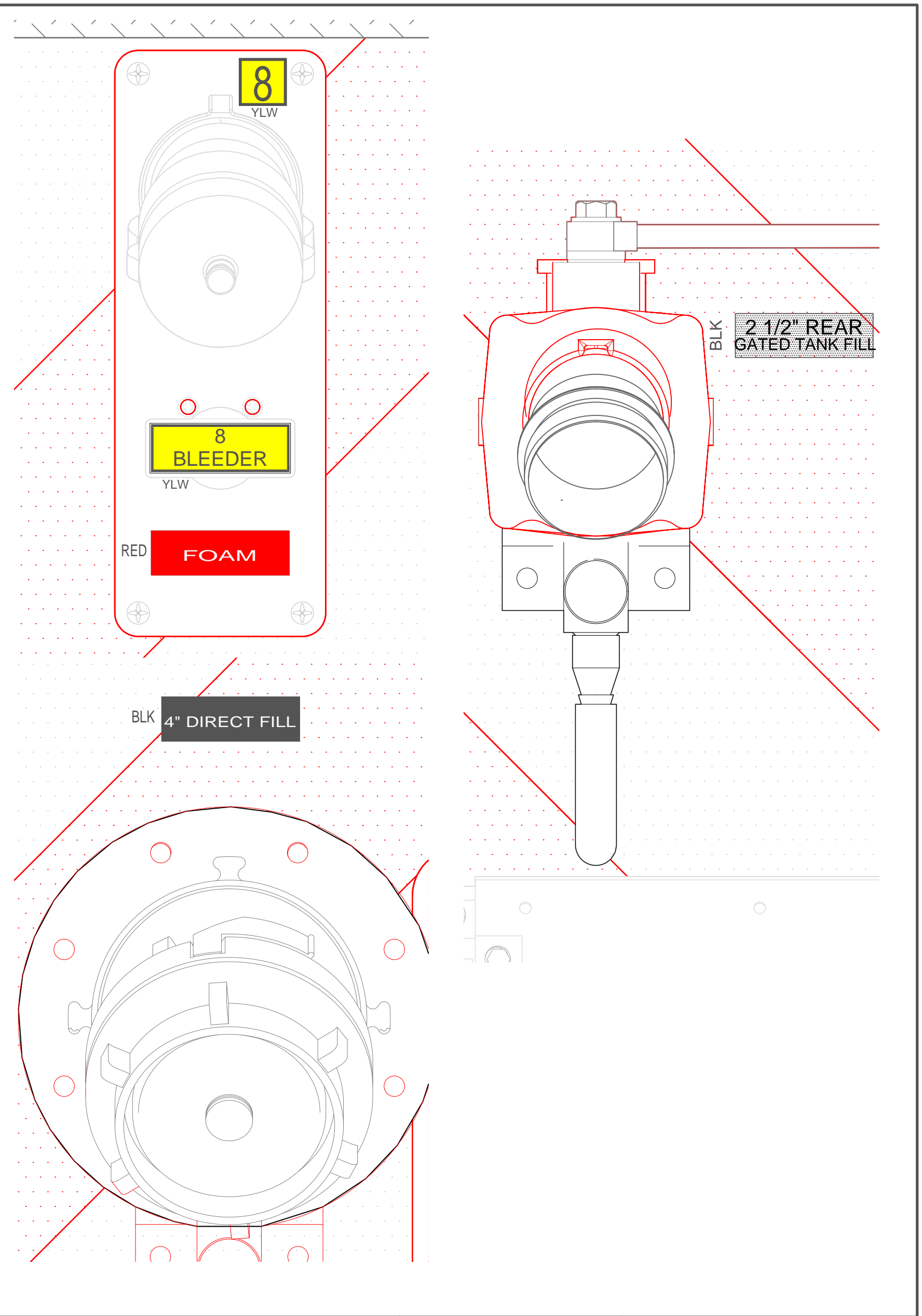
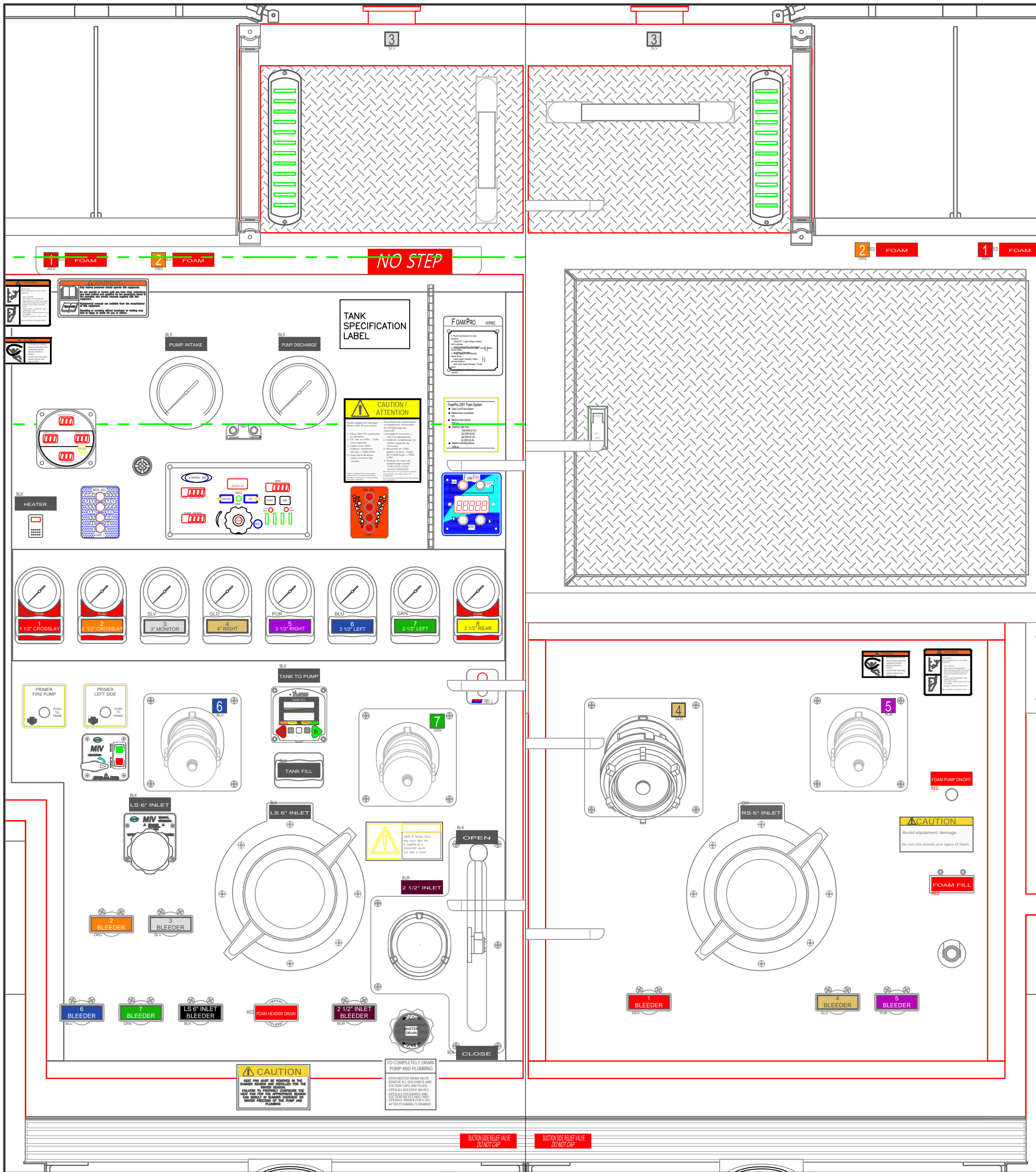
METALFAB LTD.  
847 CENTRAL ST. CENTREVILLE  
NB. CANADA E7K 2E8

TITLE TOP VIEW



DRAWING NO. 22398 PG 2 OF 3

REV 1



ENGLISH ONLY LABELS

-ALL ALUMINUM CONSTRUCTION - ALL DIMENSIONS ARE IN INCHES & APPROXIMATE

REV	DESCRIPTION	BY	DATE
1	UPDATE TO MATCH CHANGE ORDER F	HDS	FEB 27, 2025
0	FIRST ISSUE		
REVISIONS			

LAMOINE FIRE DEPARTMENT		TITLE OPERATOR'S PANELS	
JOB No.	22398		
DRAWN BY	hds		
DATE	FEBRUARY 3, 2025	DRAWING NO. 22398 PG 3 OF 3	
METALFAB LTD. 847 CENTRAL ST. CENTREVILLE NB. CANADA E7K 2E8		REV 1	