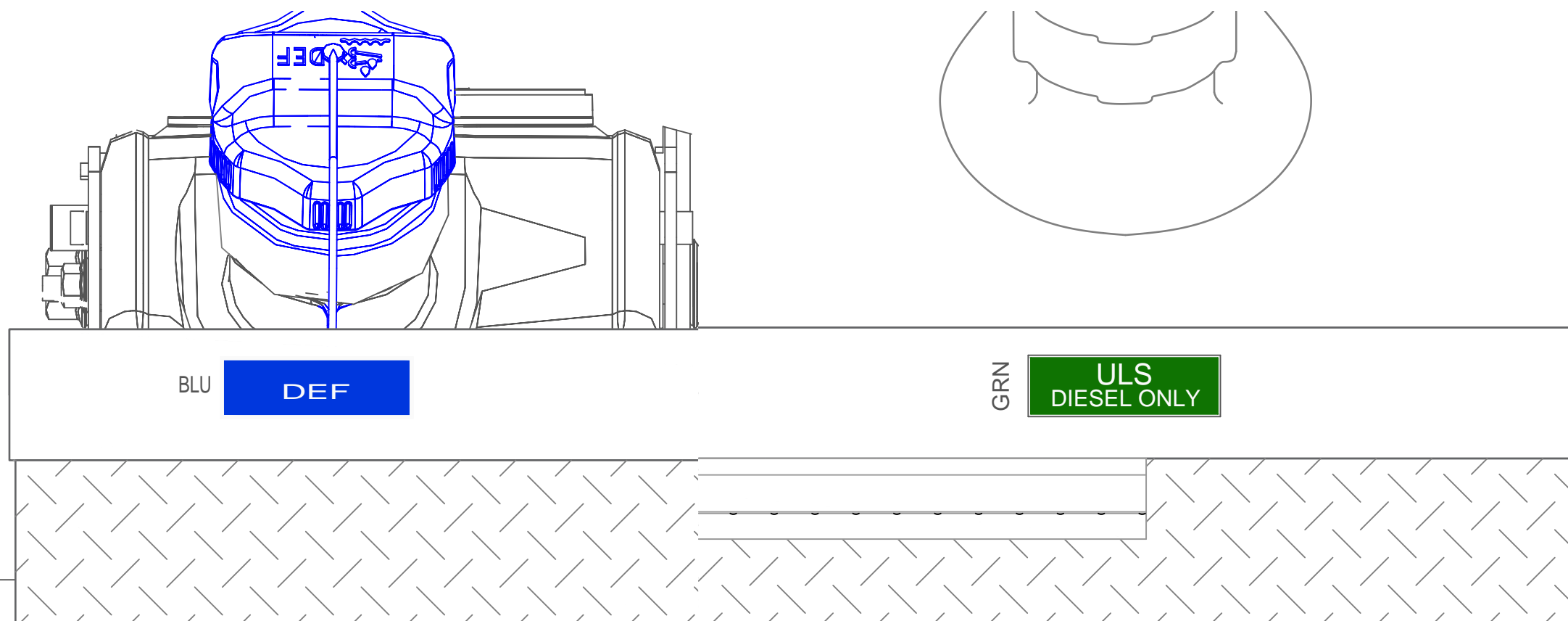
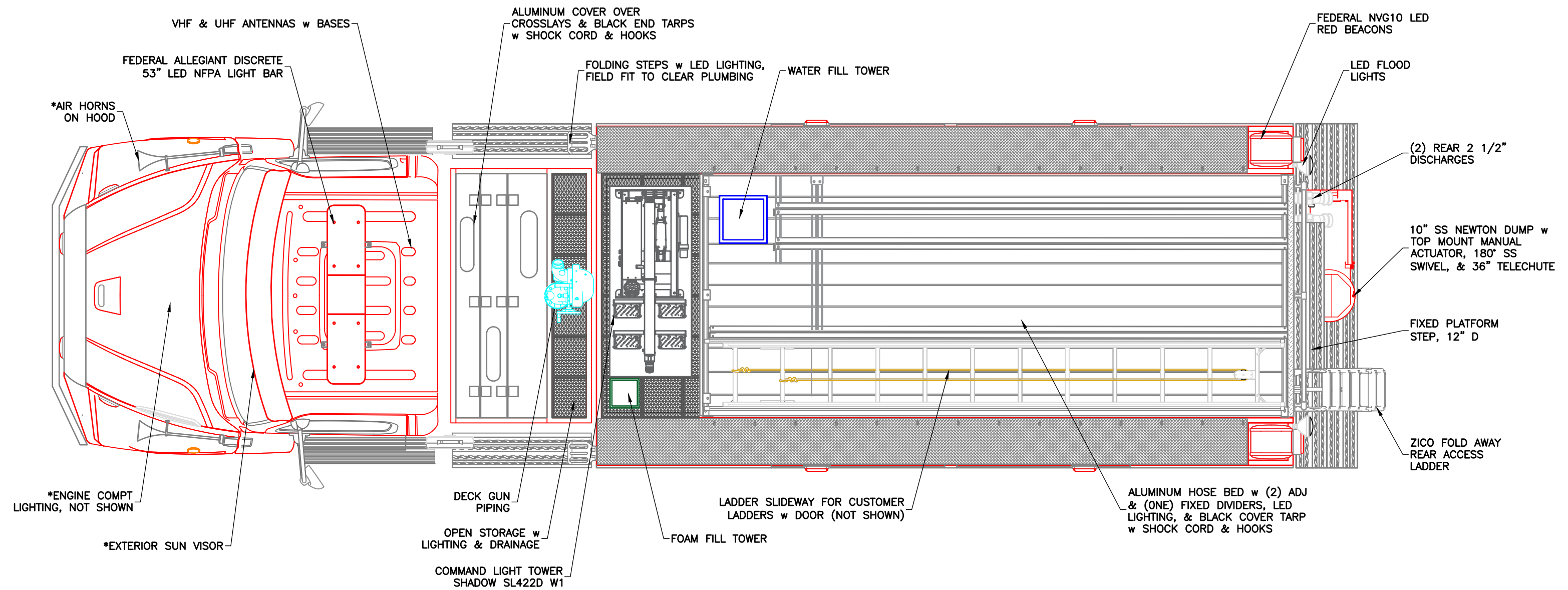


CHASSIS: FREIGHTLINER 114SD	SUCTION: 1 - 6" LEFT (NO GATE)	DISCHARGES: 1 - 5" RIGHT (3" VALVE)	1 - 2" TANK FILL
PUMP: HALE QMAX 1500 USGPM SPLIT SHAFT	1 - 6" RIGHT (NO GATE)	1 - 3" DECK GUN	2 - 1 1/2" CROSSLAYS (FOAM)
TANK: 2000 US Gal. POLYPROPYLENE	1 - 3" TANK TO PUMP	2 - 2 1/2" LEFT	
20 US Gal. FOAM CELL	1 - 2 1/2" LEFT	2 - 2 1/2" REAR	
FOAM: FOAMPRO 1600	1 - 2 1/2" RIGHT	1 - 2 1/2" RIGHT	
		1 - 2 1/2" CROSSLAY (FOAM)	

0	FIRST ISSUE	---	---
REV	DESCRIPTION	BY	DATE
REVISIONS			
NEWFIELD FIRE DEPARTMENT		TITLE GENERAL ARRANGEMENT	
JOB No. 23043			
DRAWN BY HDS			
DATE JULY 10, 2025			
METALFAB LTD. 847 CENTRAL ST. CENTREVILLE NB. CANADA E7K 2E8			
DRAWING NO. 23043-19 SHT 1 OF 3		REV 0	

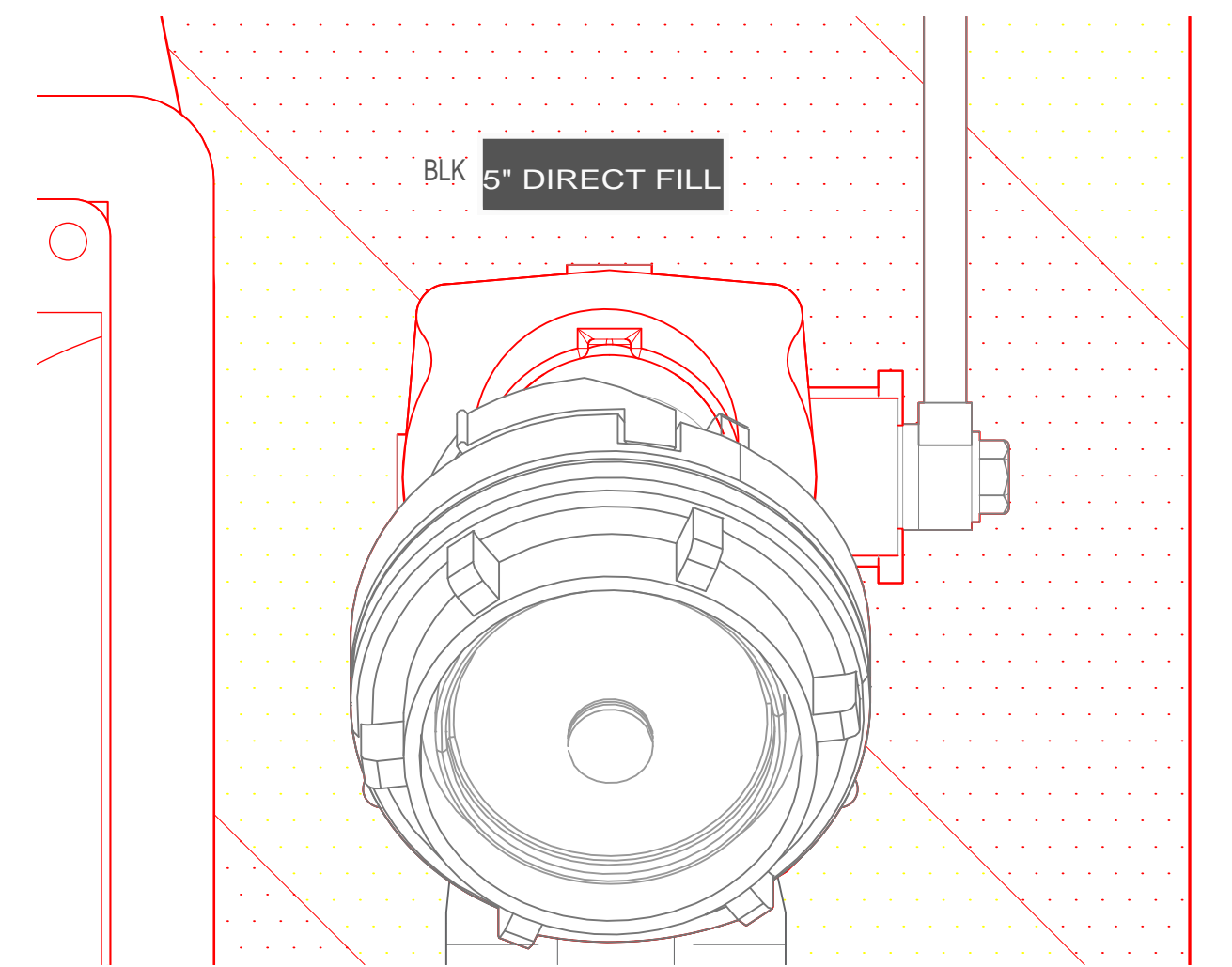
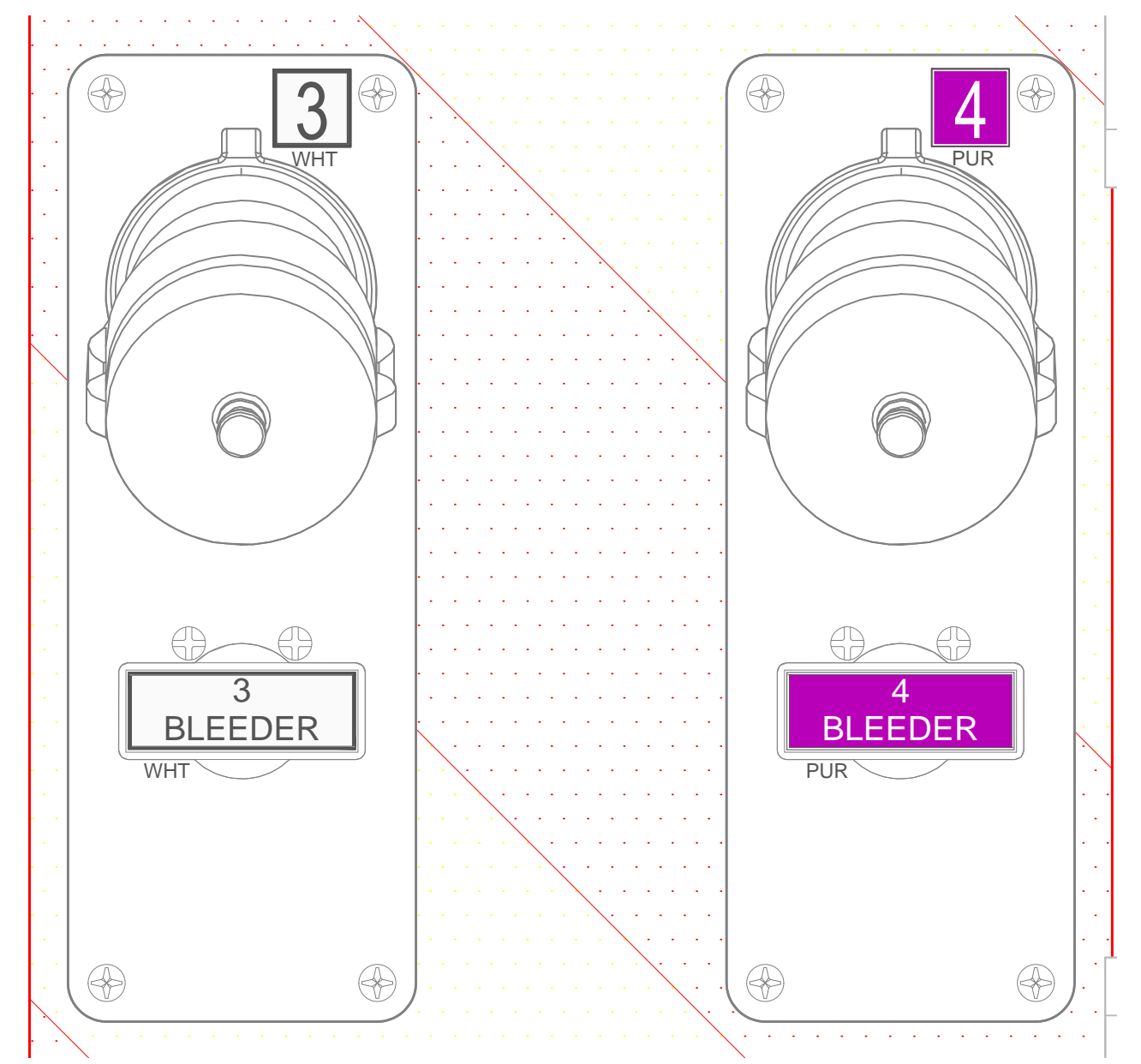
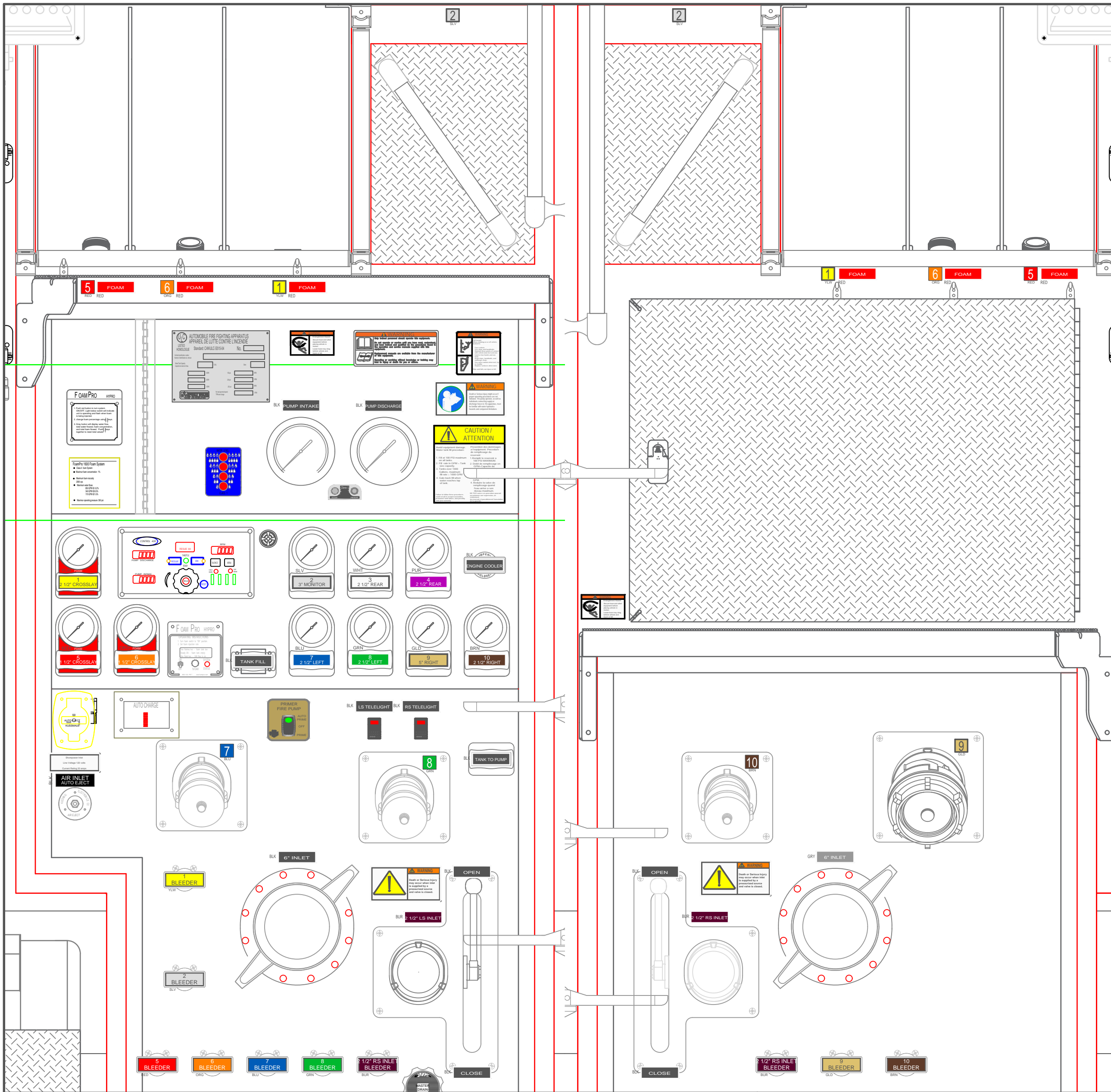
-ALL ALUMINUM CONSTRUCTION - ALL DIMENSIONS ARE IN INCHES & APPROXIMATE



-ALL ALUMINUM CONSTRUCTION - ALL DIMENSIONS ARE IN INCHES & APPROXIMATE

REV	DESCRIPTION	BY	DATE
0	FIRST ISSUE		

REVISIONS		TITLE
NEWFIELD FIRE DEPARTMENT		TOP VIEW
JOB No.	PROPOSAL	
DRAWN BY	HDS	
DATE	JULY 10, 2025	
METALFAB LTD. 847 CENTRAL ST. CENTREVILLE NB. CANADA E7K 2E8		
DRAWING NO. 23043-19 SHT 2 OF 3		REV 0



REV	DESCRIPTION	BY	DATE
0	FIRST ISSUE		

REVISIONS	
TITLE	OPERATOR'S PANELS
NEWFIELD FIRE DEPARTMENT JOB No. PROPOSAL DRAWN BY HDS DATE JULY 10, 2025 METALFAB LTD. 847 CENTRAL ST. CENTREVILLE NB. CANADA E7K 2E8	DRAWING NO. 23043-19 SHT 3 OF 3 REV 0

-ALL ALUMINUM CONSTRUCTION - ALL DIMENSIONS ARE IN INCHES & APPROXIMATE