

CHASSIS: FREIGHTLINER M2 106 PLUS 2 DOOR
 PUMP: HALE QFLO 1050 IGPM SPLIT SHAFT
 TANK: 1000 Imp. Gal. POLYPROPYLENE
 FOAM: N/A

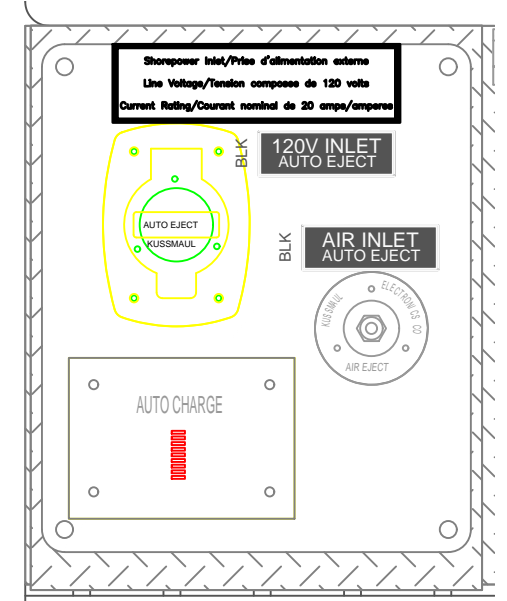
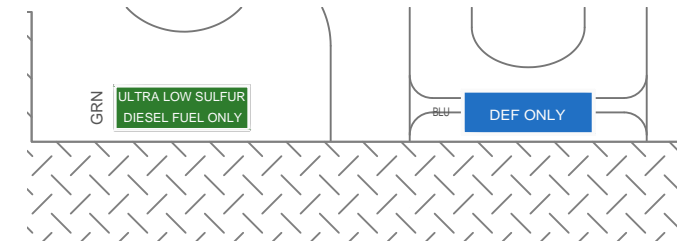
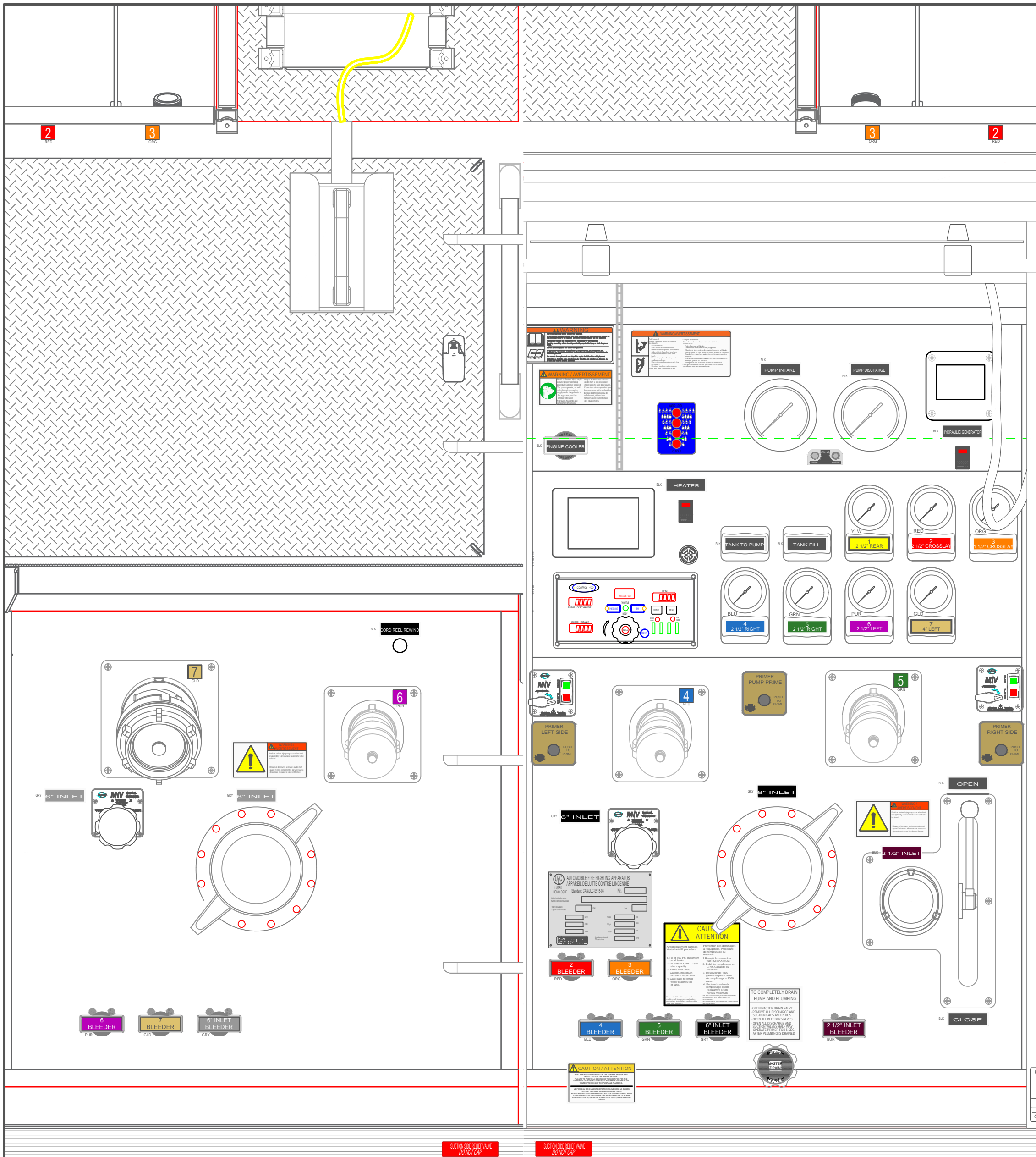
SUCTION: 1 - 6" LEFT (ELEC. GATE)
 1 - 6" RIGHT (ELEC. GATE)
 1 - 3" TANK TO PUMP
 1 - 2 1/2" RIGHT

DISCHARGES: 1 - 4" LEFT
 2 - 2 1/2" RIGHT
 1 - 2 1/2" LEFT
 1 - 2 1/2" REAR
 1 - 2 1/2" CROSSLAY

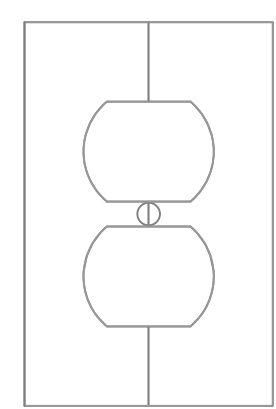
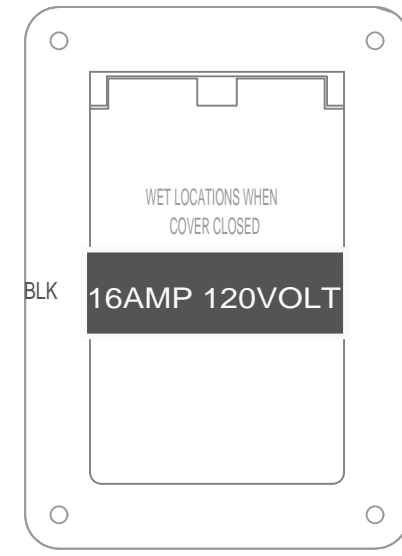
1 - 2" TANK FILL
 1 - 1 1/2" CROSSLAY

REV	DESCRIPTION	BY	DATE
0	FIRST ISSUE		
REVISIONS			
MUNICIPALITY OF THE DISTRICT OF GUYSBOROUGH		TITLE GENERAL ARRANGEMENT	
JOB No. 23151			
DRAWN BY HDS			
DATE JULY 23, 2025			
METALFAB LTD. 847 CENTRAL ST. CENTREVILLE NB. CANADA E7K 2E8		DRAWING NO. 23151-19 PG 1 OF 2	
		REV 0	

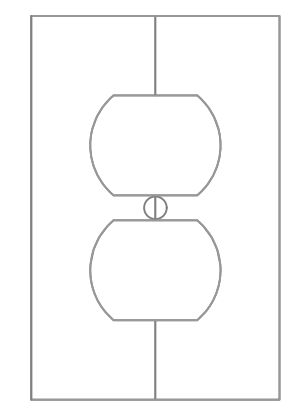
-ALL ALUMINUM CONSTRUCTION - ALL DIMENSIONS ARE IN INCHES & APPROXIMATE



BLK GENERATOR ONLY



BLK 120V 16AMP SHORELINE

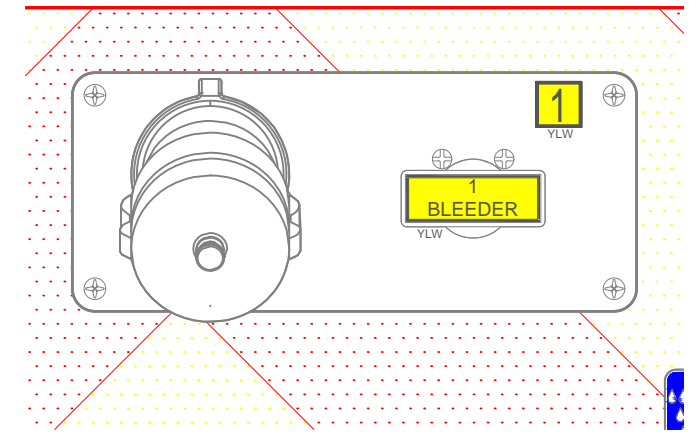
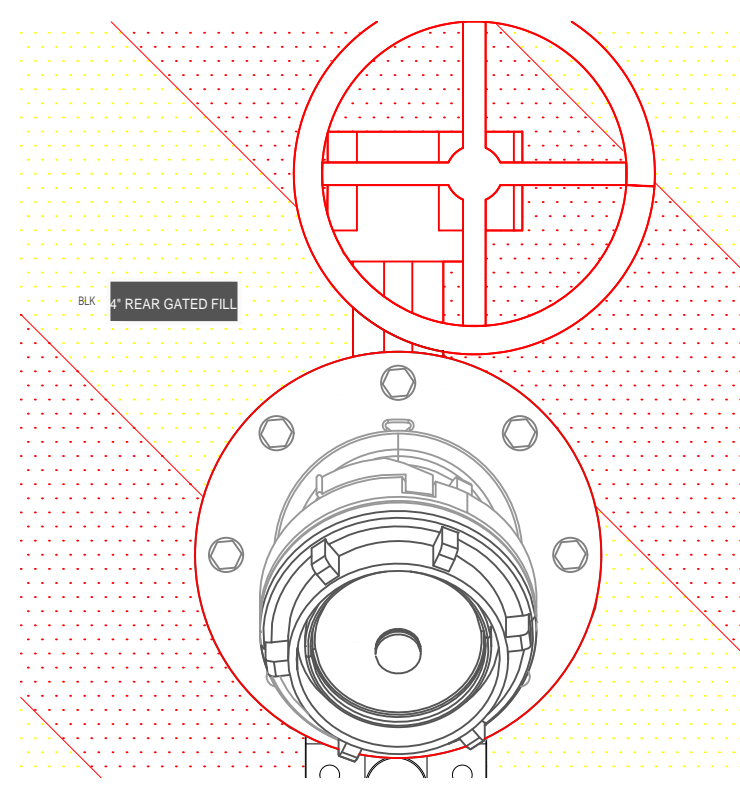


BLK 120V 16AMP GENERATOR

REAR FENDERS LEFT & RIGHT SIDES

(2) EACH IN C4 & C9

(2) IN C9



-ALL ALUMINUM CONSTRUCTION - ALL DIMENSIONS ARE IN INCHES & APPROXIMATE

0	FIRST ISSUE	BY	DATE
REV	DESCRIPTION	BY	DATE
REVISIONS			
MUNICIPALITY OF THE DISTRICT OF GUYSBOROUGH		TITLE OPERATOR'S PANELS	
JOB No.	23151		
DRAWN BY	HDS		
DATE	JULY 23, 2025		
METALFAB LTD. 847 CENTRAL ST. CENTREVILLE NB. CANADA E7K 2E8			
DRAWING NO.	23151-19 PG 2 OF 2	REV	0